

<b>Project</b>	CMHA The Heights on Main RFQ For Construction Manager at Risk (CMAR) Services 7211 East Main St. Reynoldsburg, Oh 43068	<b>Addendum Number</b>	01
----------------	---	------------------------	----

<b>Project Number</b>	MN 25003.01	<b>Date</b>	February 10, 2025
-----------------------	-------------	-------------	-------------------

All Bidders

*This addendum contains changes to the requirements of the bidding Documents, Project Manual and Construction Drawings which have been issued to date. Such changes are to be incorporated into the Construction Documents and shall apply to the work in the same meaning and force as if they had been included in the original documents. Wherever this Addendum modifies a portion of a paragraph of the Project Manual or a portion of any Drawing, the remainder of the paragraph or Drawing shall remain in force.*

<b>Specifications</b>	NA
-----------------------	----

<b>Drawings</b>	A101, A102, A103, A104, A105, A301, A302 C1.0, C1.01, C1.02, C3.01
-----------------	---

<b>Description</b>	<ol style="list-style-type: none"> <li>1. Preliminary drawings are attached.</li> <li>2. Pre-bid sign in sheet.</li> <li>3. Conceptual renderings.</li> </ol>
--------------------	---

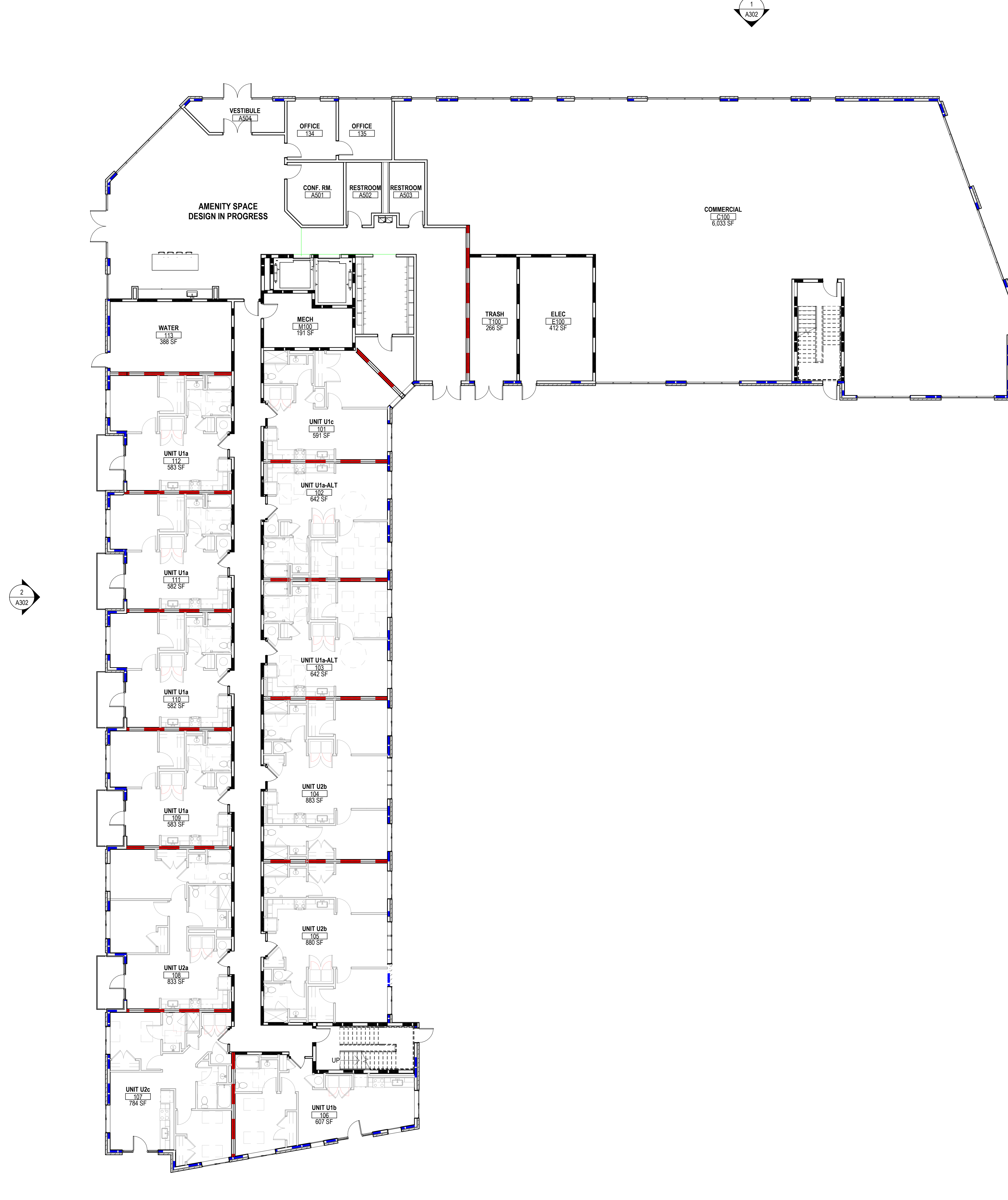
<b>Attachments</b>	Pre-bid sign in sheet Sheets listed under Drawings Conceptual renderings
--------------------	--



## THE HEIGHTS ON MAIN - REQUEST FOR QUALIFICATIONS (RFQ) PRE-SUBMISSION MEETING – SIGN-IN SHEET

<b>Project:</b> The Heights on Main - RFQ	<b>Meeting Date:</b> 1/30/2025 @ 10:00 am
<b>Facilitator:</b> Mike Wagner	<b>Place/Room:</b> 880 E. 11 <sup>th</sup> Ave.

Name	Company	Phone	E-Mail
Chris Belcastro	CMHA	614-512-3876	<a href="mailto:cbelcastro@cmhanet.com">cbelcastro@cmhanet.com</a>
Mike Wagner	CMHA	614-818-4911	<a href="mailto:mwagner@cmhanet.com">mwagner@cmhanet.com</a>
Anup Jamaran	Moody Nolan	614 461 4664	AnupJ@moodynolan.com
GREG SANKEY	ELFORD, INC	614 601 8023	G.SANKEY@ELFORD.COM
Bo Ritter	TDC	414-309-4715	BRITTER@DOUGLASCORPORATION.COM
Ron Siebenaler	Douglas Co.	419-466-2850	rsiebenaler@douglascorpany.com
GREG RAY	HGC CONST.	614-206-4540	GRAY@HGC.CONSTRUCTION.COM
Steve Totzke	Marker Construction	614-915-2584	Stotzke@Buildwithmarker.com
Mike Girouard	Marker Const	614.736.1619	mgirouard@buildwithmarker.com
Jim Cetovich	Ruscilli CONSTR.	614 203 5629	jcetovich@ruscilli.com
Capria Gross	Ruscilli Construction	710-607-9805	cgross@ruscilli.com
JEFF TILTON	SCAIN DEVELOPMENT & CONSTRUCTION	614-735-0033	jtilton@scaindc.com
Chris Bowman	CleanE Dumpster	614-930-2761	scdescleanedumpster@gmail.com
NATHAN LARGER	BROWN'S CONSTRUCTION	419-590-4367	nlarger@prunks1951.com
Lauren Drinkwine	Continental	614-315 6634	ldrinkwine@builtbycontinental.com
Jim Ruffing	Smoot Construction	614 253-9000	jruffing@srsmoot.com
Jeff Krebs	Painter	614-352-5236	jettk@da.intergroup.com



### UNIT MATRIX INFORMATION

UNIT TYPE	AREA (NET SF)	LEVEL 01	LEVEL 02	LEVEL 03	LEVEL 04	LEVEL 05	TOTAL
UNIT U1a 1 BED/ 1 BATH	582 SF	4	7	7	7	7	32
UNIT U1a - ALT 1 BED/ 1 BATH	642 SF	2	2	2	2	2	10
UNIT U1b 1 BED/ 1 BATH	699 SF		1	1	1	1	4
UNIT U1c 1 BED/ 1 BATH	591 SF	1	2	2	2	2	9
UNIT U1d 1 BED/ 1 BATH	623 SF	1	1	1	1	1	5
UNIT U2a 2 BED/ 2 BATH	833 SF	1	3	3	3	3	13
UNIT U2b 2 BED/ 2 BATH	891 SF	2	3	3	3	3	14
UNIT U2c 2 BED/ 2 BATH	784 SF	1	1	1	1	1	5
UNIT U2d 2 BED/ 2 BATH	992 SF		1	1	1		3
UNIT U2e 2 BED/ 2 BATH	1,145 SF		1	1	1		3
UNIT U2f 2 BED/ 1 BATH	821 SF		1	1	1	1	4
		12	23	23	23	21	102

### GROSS SQUARE FOOTAGE

FIRST FLOOR	21,706 GSF
SECOND FLOOR	21,130 GSF
THIRD FLOOR	21,130 GSF
FOURTH FLOOR	21,130 GSF
FIFTH FLOOR	19,203 GSF
EXTERIOR AMENITY DECK	1,927 SF
<b>TOTAL</b>	<b>106,224 GSF</b>

- ### FLOOR PLAN GENERAL NOTES
- ALL DIMENSIONS ARE TO FACE OF WALL (UNLESS NOTED OTHERWISE).
  - SEE STRUCTURAL DRAWINGS FOR LOCATIONS OF ALL STEEL REINFORCING IN WALL & FLOOR CONSTRUCTION.
  - SEE FINISH SCHEDULE FOR ADDITIONAL INFORMATION OF LOCATIONS AND TYPES OF FINISH MATERIALS.
  - SEE ELEVATIONS AND STRUCTURAL DRAWINGS FOR LOCATIONS OF EXPANSION & CONTROL JOINTS. CONTRACTOR SHALL PROVIDE ADDITIONAL INTERIOR CONTROL JOINTS AS REQUIRED TO COMPLY WITH MAXIMUM SPACING REQUIREMENTS IN SPECIFICATIONS AND NATIONAL MASONRY INSTITUTE. SEE DETAILS ON **XXX**.
  - MECHANICAL & ELECTRICAL EQUIPMENT SHALL BE ON HOUSEKEEPING PADS. PADS ARE TO BE PROVIDED BY THE TRADE SUPPLYING THE EQUIPMENT. SEE MECHANICAL AND ELECTRICAL DRAWINGS FOR ADDITIONAL INFORMATION. WORK TO BE COORDINATED THROUGH THE GENERAL TRADES CONTRACTOR. PADS 4" MIN. 4" THICK W/ W.W.F., UNLESS NOTED OTHERWISE).

- ### CODED NOTE LEGEND
- ① TBD
  - ② TBD
  - ③ TBD
  - ④ TBD
  - ⑤ TBD

- ### RATED WALL LEGEND
- NON-RATED SMOKE RESISTIVE PARTITION TO DECK
  - 1 HOUR SMOKE RESISTIVE PARTITION TO DECK
  - 2 HOUR SMOKE RESISTIVE PARTITION TO DECK
  - 3 HOUR SMOKE RESISTIVE PARTITION TO DECK
  - 4 HOUR SMOKE RESISTIVE PARTITION TO DECK
  - 1 HOUR FIRE RATED PARTITION TO DECK
  - 2 HOUR FIRE RATED PARTITION TO DECK
  - 3 HOUR FIRE RATED PARTITION TO DECK
  - 4 HOUR FIRE RATED PARTITION TO DECK

- ### KEYNOTE LEGEND

#	DATE	CHANGE DESCRIPTION

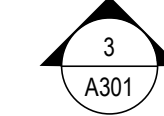
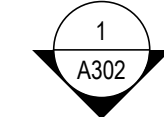
**THE HEIGHTS ON MAIN**  
 COLUMBUS METROPOLITAN HOUSING AUTHORITY  
 7221 US HWY 40, REYNOLDSBURG, OH 43075  
 FOR CMHA

**Moody Nolan**  
 300 SPRUCE STREET SUITE 300 COLUMBUS, OHIO 43215  
 PHONE: 614-461-4664

DRAWING TITLE:  
**LEVEL 01 - FLOOR PLAN - OVERALL**

	02/05/25
	25003
	<b>A101</b>
PRELIMINARY DRAWINGS	

**1 PLAN** LEVEL 01 - FLOOR PLAN - OVERALL  
 3/32" = 1'-0"



**1 PLAN** LEVEL 02 - FLOOR PLAN - OVERALL  
 3/32" = 1'-0"

### UNIT MATRIX INFORMATION

UNIT TYPE	AREA (NET SF)	LEVEL 01	LEVEL 02	LEVEL 03	LEVEL 04	LEVEL 05	TOTAL
UNIT U1a 1 BED/ 1 BATH	582 SF	4	7	7	7	7	32
UNIT U1a - ALT 1 BED/ 1 BATH	642 SF	2	2	2	2	2	10
UNIT U1b 1 BED/ 1 BATH	699 SF		1	1	1	1	4
UNIT U1c 1 BED/ 1 BATH	591 SF	1	2	2	2	2	9
UNIT U1d 1 BED/ 1 BATH	623 SF	1	1	1	1	1	5
UNIT U2a 2 BED/ 2 BATH	833 SF	1	3	3	3	3	13
UNIT U2b 2 BED/ 2 BATH	891 SF	2	3	3	3	3	14
UNIT U2c 2 BED/ 2 BATH	784 SF	1	1	1	1	1	5
UNIT U2d 2 BED/ 2 BATH	992 SF		1	1	1		3
UNIT U2e 2 BED/ 2 BATH	1,145 SF		1	1	1		3
UNIT U2f 2 BED/ 1 BATH	821 SF		1	1	1	1	4
		12	23	23	23	21	102

**GROSS SQUARE FOOTAGE**

FIRST FLOOR	21,706 GSF
SECOND FLOOR	21,130 GSF
THIRD FLOOR	21,130 GSF
FOURTH FLOOR	21,130 GSF
FIFTH FLOOR	19,203 GSF
EXTERIOR AMENITY DECK	1,927 SF
<b>TOTAL</b>	<b>106,224 GSF</b>

- ### FLOOR PLAN GENERAL NOTES
- ALL DIMENSIONS ARE TO FACE OF WALL (UNLESS NOTED OTHERWISE).
  - SEE STRUCTURAL DRAWINGS FOR LOCATIONS OF ALL STEEL REINFORCING IN WALL & FLOOR CONSTRUCTION.
  - SEE FINISH SCHEDULE FOR ADDITIONAL INFORMATION OF LOCATIONS AND TYPES OF FINISH MATERIALS.
  - SEE ELEVATIONS AND STRUCTURAL DRAWINGS FOR LOCATIONS OF EXPANSION & CONTROL JOINTS. CONTRACTOR SHALL PROVIDE ADDITIONAL INTERIOR CONTROL JOINTS AS REQUIRED TO COMPLY WITH MAXIMUM SPACING REQUIREMENTS IN SPECIFICATIONS AND NATIONAL MASONRY INSTITUTE. SEE DETAILS ON **AXXX**.
  - MECHANICAL & ELECTRICAL EQUIPMENT SHALL BE ON HOUSEKEEPING PADS. PADS ARE TO BE PROVIDED BY THE TRADE SUPPLYING THE EQUIPMENT. SEE MECHANICAL AND ELECTRICAL DRAWINGS FOR ADDITIONAL INFORMATION. WORK TO BE COORDINATED THROUGH THE GENERAL TRADES CONTRACTOR. PADS 4" MIN. 4" THICK W/ W.W.F., UNLESS NOTED OTHERWISE.

- ### CODED NOTE LEGEND
- ① TBD
  - ② TBD
  - ③ TBD
  - ④ TBD
  - ⑤ TBD

- ### RATED WALL LEGEND
- NON-RATED SMOKE RESISTIVE PARTITION TO DECK
  - 1 HOUR SMOKE RESISTIVE PARTITION TO DECK
  - 2 HOUR SMOKE RESISTIVE PARTITION TO DECK
  - 3 HOUR SMOKE RESISTIVE PARTITION TO DECK
  - 4 HOUR SMOKE RESISTIVE PARTITION TO DECK
  - 1 HOUR FIRE RATED PARTITION TO DECK
  - 2 HOUR FIRE RATED PARTITION TO DECK
  - 3 HOUR FIRE RATED PARTITION TO DECK
  - 4 HOUR FIRE RATED PARTITION TO DECK

- ### KEYNOTE LEGEND
- | KEY VALUE | KEYNOTE TEXT |
|-----------|--------------|
|           |              |

#	DATE	CHANGE DESCRIPTION

**THE HEIGHTS ON MAIN**  
 COLUMBUS METROPOLITAN HOUSING AUTHORITY  
 7221 US HWY 40, REYNOLDSBURG, OH 43075  
 FOR CMHA

**Moody Nolan**  
 300 SPRUCE STREET SUITE 300 COLUMBUS, OHIO 43215  
 PHONE: 614-461-4664

DRAWING TITLE:  
**LEVEL 02 - FLOOR PLAN - OVERALL**

	02/05/25
	25003
	<b>A102</b>
PRELIMINARY DRAWINGS	



**1 PLAN** LEVEL 04 - FLOOR PLAN - OVERALL  
 3/32" = 1'-0"



**UNIT MATRIX INFORMATION**

UNIT TYPE	AREA (NET SF)	LEVEL 01	LEVEL 02	LEVEL 03	LEVEL 04	LEVEL 05	TOTAL
UNIT U1a 1 BED/ 1 BATH	582 SF	4	7	7	7	7	32
UNIT U1a - ALT 1 BED/ 1 BATH	642 SF	2	2	2	2	2	10
UNIT U1b 1 BED/ 1 BATH	699 SF		1	1	1	1	4
UNIT U1c 1 BED/ 1 BATH	591 SF	1	2	2	2	2	9
UNIT U1d 1 BED/ 1 BATH	623 SF	1	1	1	1	1	5
UNIT U2a 2 BED/ 2 BATH	833 SF	1	3	3	3	3	13
UNIT U2b 2 BED/ 2 BATH	891 SF	2	3	3	3	3	14
UNIT U2c 2 BED/ 2 BATH	784 SF	1	1	1	1	1	5
UNIT U2d 2 BED/ 2 BATH	992 SF		1	1	1		3
UNIT U2e 2 BED/ 2 BATH	1,145 SF		1	1	1		3
UNIT U2f 2 BED/ 1 BATH	821 SF		1	1	1	1	4
		12	23	23	23	21	102

**GROSS SQUARE FOOTAGE**

FIRST FLOOR	21,706 GSF
SECOND FLOOR	21,130 GSF
THIRD FLOOR	21,130 GSF
FOURTH FLOOR	21,130 GSF
FIFTH FLOOR	19,203 GSF
EXTERIOR AMENITY DECK	1,927 SF
<b>TOTAL</b>	<b>106,224 GSF</b>

**FLOOR PLAN GENERAL NOTES**

- ALL DIMENSIONS ARE TO FACE OF WALL (UNLESS NOTED OTHERWISE).
- SEE STRUCTURAL DRAWINGS FOR LOCATIONS OF ALL STEEL REINFORCING IN WALL & FLOOR CONSTRUCTION.
- SEE FINISH SCHEDULE FOR ADDITIONAL INFORMATION OF LOCATIONS AND TYPES OF FINISH MATERIALS.
- SEE ELEVATIONS AND STRUCTURAL DRAWINGS FOR LOCATIONS OF EXPANSION & CONTROL JOINTS. CONTRACTOR SHALL PROVIDE ADDITIONAL INTERIOR CONTROL JOINTS AS REQUIRED TO COMPLY WITH MAXIMUM SPACING REQUIREMENTS IN SPECIFICATIONS AND NATIONAL MASONRY INSTITUTE. SEE DETAILS ON **AAA**.
- MECHANICAL & ELECTRICAL EQUIPMENT SHALL BE ON HOUSEKEEPING PADS. PADS ARE TO BE PROVIDED BY THE TRADE SUPPLYING THE EQUIPMENT. SEE MECHANICAL AND ELECTRICAL DRAWINGS FOR ADDITIONAL INFORMATION. WORK TO BE COORDINATED THROUGH THE GENERAL TRADES CONTRACTOR. PADS 4" MIN. 4" THICK W/ W.W.F., UNLESS NOTED OTHERWISE.

**CODED NOTE LEGEND**

- ① TBD
- ② TBD
- ③ TBD
- ④ TBD
- ⑤ TBD

**RATED WALL LEGEND**

- NON-RATED SMOKE RESISTIVE PARTITION TO DECK
- 1 HOUR SMOKE RESISTIVE PARTITION TO DECK
- 2 HOUR SMOKE RESISTIVE PARTITION TO DECK
- 3 HOUR SMOKE RESISTIVE PARTITION TO DECK
- 4 HOUR SMOKE RESISTIVE PARTITION TO DECK
- 1 HOUR FIRE RATED PARTITION TO DECK
- 2 HOUR FIRE RATED PARTITION TO DECK
- 3 HOUR FIRE RATED PARTITION TO DECK
- 4 HOUR FIRE RATED PARTITION TO DECK

**KEYNOTE LEGEND**

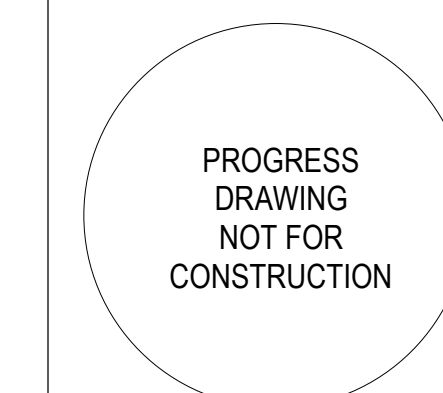
#	DATE	CHANGE DESCRIPTION

**THE HEIGHTS ON MAIN**  
 COLUMBUS METROPOLITAN HOUSING AUTHORITY  
 7221 US HWY 40, REYNOLDSBURG, OH  
 FOR CMHA

**Moody Nolan**  
 300 SPRUCE STREET SUITE 300  
 COLUMBUS, OHIO 43215  
 PHONE: 614-461-4664

DRAWING TITLE:  
**LEVEL 04 - FLOOR PLAN - OVERALL**

02/05/25  
 25003  
**A104**  
 PRELIMINARY DRAWINGS



**1 PLAN** LEVEL 05 - FLOOR PLAN - OVERALL  
 3/32" = 1'-0"



UNIT MATRIX INFORMATION							
UNIT TYPE	AREA (NET SF)	LEVEL 01	LEVEL 02	LEVEL 03	LEVEL 04	LEVEL 05	TOTAL
UNIT U1a 1 BED/ 1 BATH	582 SF	4	7	7	7	7	32
UNIT U1a - ALT 1 BED/ 1 BATH	642 SF	2	2	2	2	2	10
UNIT U1b 1 BED/ 1 BATH	699 SF		1	1	1	1	4
UNIT U1c 1 BED/ 1 BATH	591 SF	1	2	2	2	2	9
UNIT U1d 1 BED/ 1 BATH	623 SF	1	1	1	1	1	5
UNIT U2a 2 BED/ 2 BATH	833 SF	1	3	3	3	3	13
UNIT U2b 2 BED/ 2 BATH	891 SF	2	3	3	3	3	14
UNIT U2c 2 BED/ 2 BATH	784 SF	1	1	1	1	1	5
UNIT U2d 2 BED/ 2 BATH	992 SF		1	1	1		3
UNIT U2e 2 BED/ 2 BATH	1,145 SF		1	1	1		3
UNIT U2f 2 BED/ 1 BATH	821 SF		1	1	1	1	4
		12	23	23	23	21	102

**GROSS SQUARE FOOTAGE**

FIRST FLOOR	21,706 GSF
SECOND FLOOR	21,130 GSF
THIRD FLOOR	21,130 GSF
FOURTH FLOOR	21,130 GSF
FIFTH FLOOR	19,203 GSF
EXTERIOR AMENITY DECK	1,927 SF
<b>TOTAL</b>	<b>106,224 GSF</b>

- FLOOR PLAN GENERAL NOTES**
- ALL DIMENSIONS ARE TO FACE OF WALL (UNLESS NOTED OTHERWISE).
  - SEE STRUCTURAL DRAWINGS FOR LOCATIONS OF ALL STEEL REINFORCING IN WALL & FLOOR CONSTRUCTION.
  - SEE FINISH SCHEDULE FOR ADDITIONAL INFORMATION OF LOCATIONS AND TYPES OF FINISH MATERIALS.
  - SEE ELEVATIONS AND STRUCTURAL DRAWINGS FOR LOCATIONS OF EXPANSION & CONTROL JOINTS. CONTRACTOR SHALL PROVIDE ADDITIONAL INTERIOR CONTROL JOINTS AS REQUIRED TO COMPLY WITH MAXIMUM SPACING REQUIREMENTS IN SPECIFICATIONS AND NATIONAL MASONRY INSTITUTE. SEE DETAILS ON A303.
  - MECHANICAL & ELECTRICAL EQUIPMENT SHALL BE ON HOUSEKEEPING PADS. PADS ARE TO BE PROVIDED BY THE TRADE SUPPLYING THE EQUIPMENT. SEE MECHANICAL AND ELECTRICAL DRAWINGS FOR ADDITIONAL INFORMATION. WORK TO BE COORDINATED THROUGH THE GENERAL TRADES CONTRACTOR. PADS 4" MIN. 4" THICK W/ W.W.F., UNLESS NOTED OTHERWISE.

- CODED NOTE LEGEND**
- ① TBD
  - ② TBD
  - ③ TBD
  - ④ TBD
  - ⑤ TBD

- RATED WALL LEGEND**
- NON-RATED SMOKE RESISTIVE PARTITION TO DECK
  - 1 HOUR SMOKE RESISTIVE PARTITION TO DECK
  - 2 HOUR SMOKE RESISTIVE PARTITION TO DECK
  - 3 HOUR SMOKE RESISTIVE PARTITION TO DECK
  - 4 HOUR SMOKE RESISTIVE PARTITION TO DECK
  - 1 HOUR FIRE RATED PARTITION TO DECK
  - 2 HOUR FIRE RATED PARTITION TO DECK
  - 3 HOUR FIRE RATED PARTITION TO DECK
  - 4 HOUR FIRE RATED PARTITION TO DECK

**KEYNOTE LEGEND**

#	DATE	CHANGE DESCRIPTION

**THE HEIGHTS ON MAIN**  
 COLUMBUS METROPOLITAN HOUSING AUTHORITY  
 7221 US HWY 40, REYNOLDSBURG, OH 43075  
 FOR CMHA

**Moody Nolan**  
 300 SPRUCE STREET  
 SUITE 300  
 COLUMBUS, OHIO 43215  
 PHONE: 614-461-4664

DRAWING TITLE:  
**LEVEL 05 - FLOOR PLAN - OVERALL**

	02/05/25
	25003
	<b>A105</b>
	PRELIMINARY DRAWINGS







**3** ELEVATION WEST  
3/32" = 1'-0" REF: 1 / A101



**2** ELEVATION NORTH  
3/32" = 1'-0" REF: 1 / A101

**1** ELEVATION NORTHWEST  
3/32" = 1'-0" REF: 1 / A101

**KEYNOTE LEGEND**

KEY VALUE	KEYNOTE TEXT
-----------	--------------

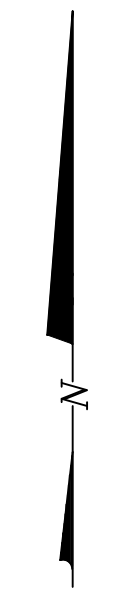
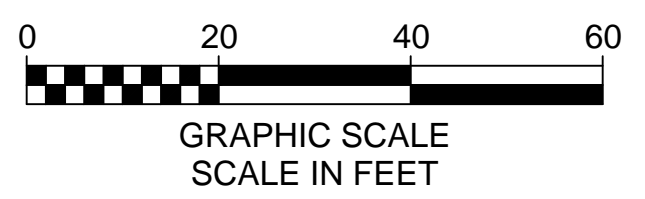
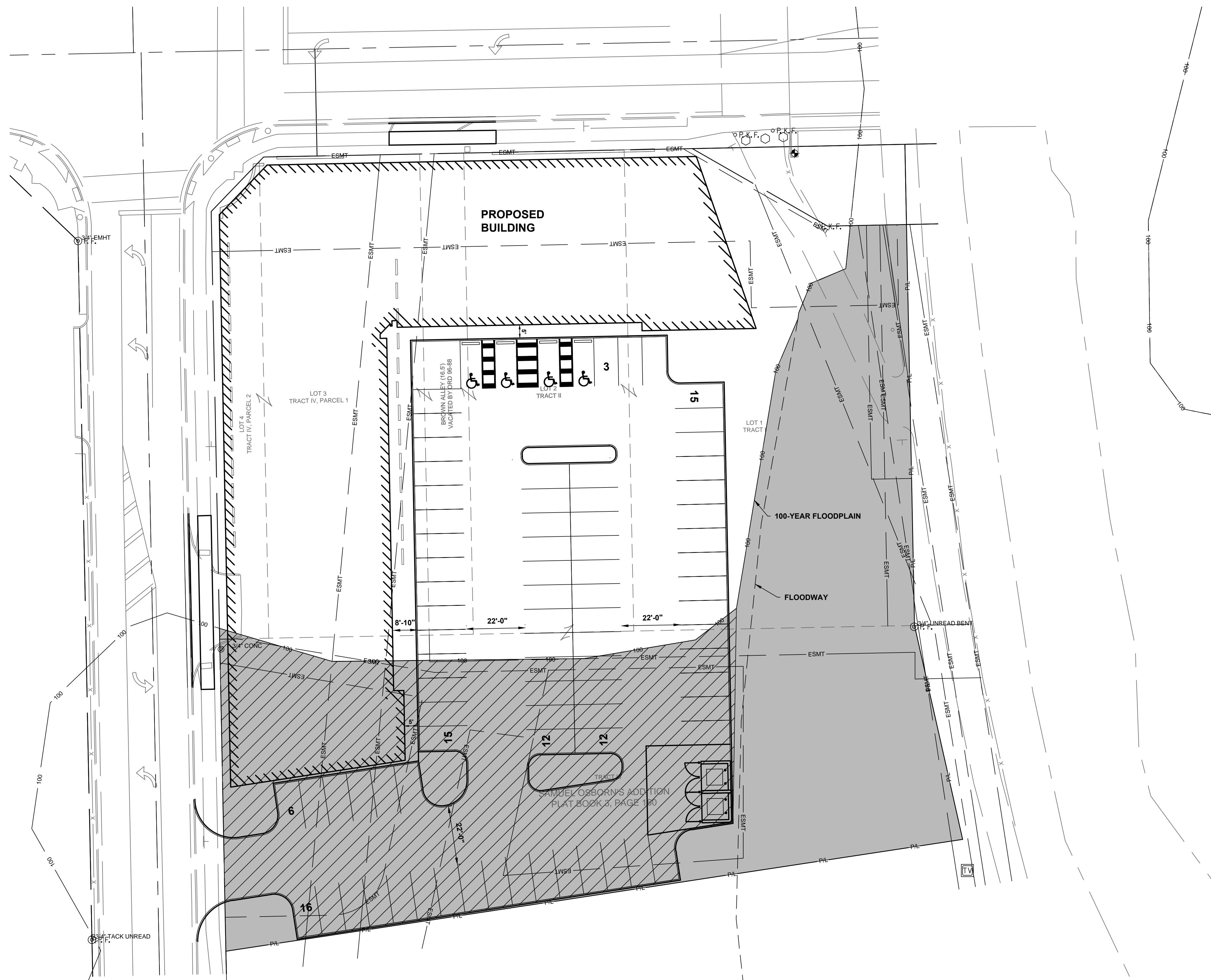
#	DATE	CHANGE DESCRIPTION

**THE HEIGHTS ON MAIN**  
COLUMBUS METROPOLITAN HOUSING AUTHORITY  
7221 US HWY 40, REYNOLDSBURG, OH 43075  
FOR CMHA

**Moody Nolan**  
300 SPRUCE STREET SUITE 300 COLUMBUS, OHIO 43215  
PHONE: 614-461-4664

DRAWING TITLE:  
**EXTERIOR ELEVATIONS - OVERALL**

<p>PROGRESS DRAWING NOT FOR CONSTRUCTION</p>	02/05/25
	25003
	<b>A301</b>
PRELIMINARY DRAWINGS	



**STAKING LEGEND**

- EXISTING**
- PL — PROPERTY LINE
  - RW — RIGHT-OF-WAY
  - CL — ROADWAY CENTERLINE
  - BL — SURVEY BASELINE
  - ▨ BUILDING WALL
  - ▨ CURB AND GUTTER
  - ▨ CURB
  - ▨ PAVEMENT
  - ▨ WALK
  - X - X - FENCE
  - ESMT - EASEMENT
  - FLAG POLE
  - TB TRAFFIC BOLLARD
  - MAIL BOX
  - TEST BORE
  - SIGN
  - BUSH/SHRUB
  - DECIDUOUS TREE
  - CONIFEROUS TREE
  - TREE LINE
  - △ SURVEY CONTROL POINT
  - ⊕ BENCHMARK
  - MONUMENT FOUND, NO. 5 REBAR UNLESS OTHERWISE NOTED.
  - PAINTED WHEELCHAIR SYMBOL

- PROPOSED**
- ▨ BUILDING WALL
  - ▨ STRAIGHT CURB PER DETAIL XX
  - ▨ PAVEMENT
  - ▨ WALK
  - ▨ PROPERTY WITHIN FLOODPLAIN = 0.75 ACRES
  - ▨ DEVELOPMENT WITHIN FLOODPLAIN = 0.41 ACRES

#	DATE	CHANGE DESCRIPTION

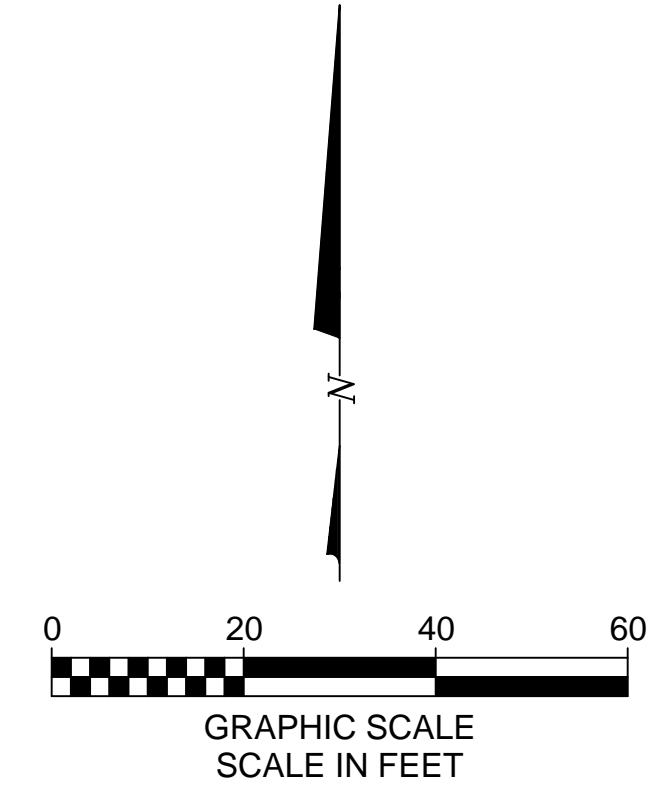
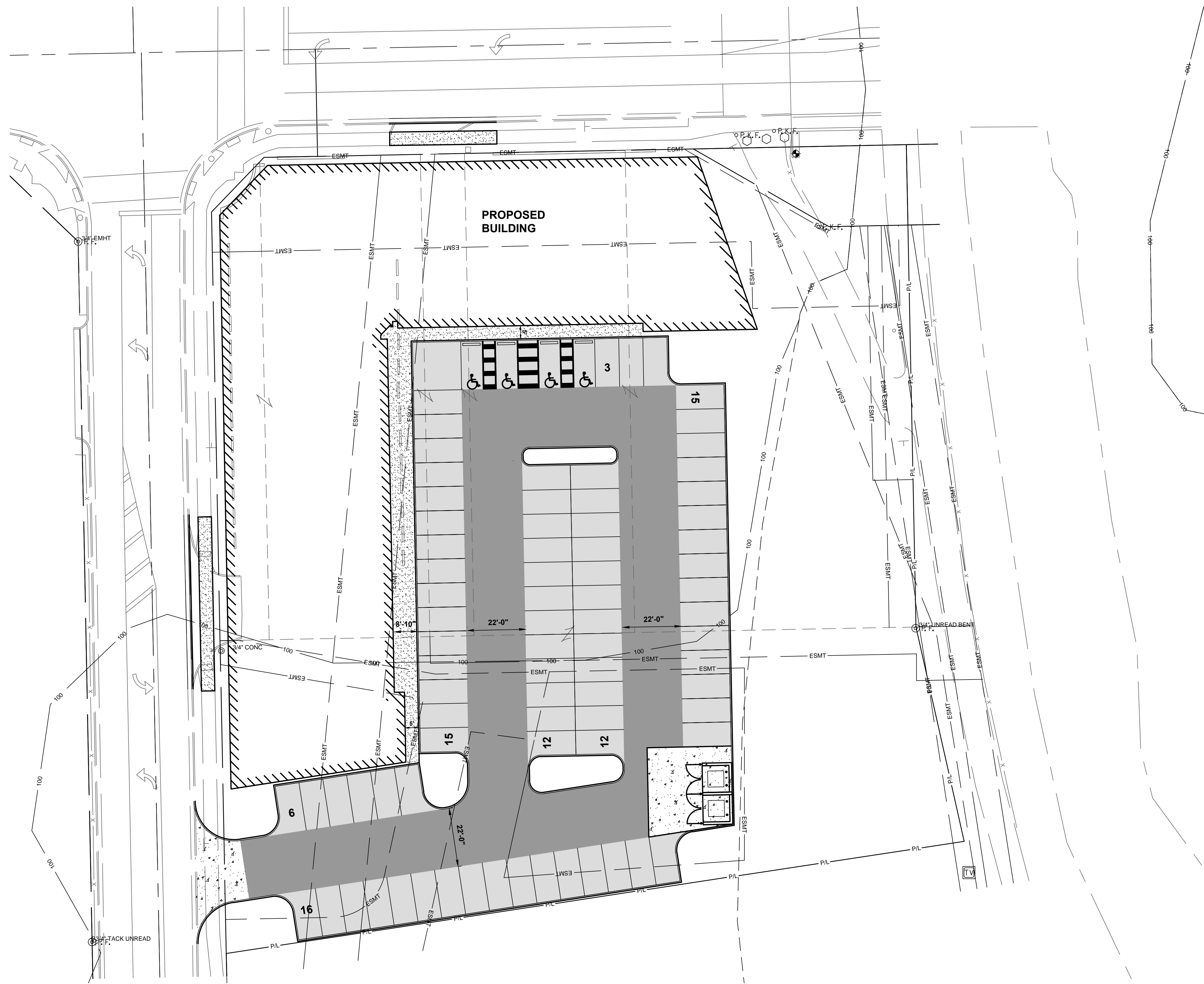


**Moody Nolan**  
 300 SPRUCE STREET  
 SUITE 300  
 COLUMBUS, OHIO 43215  
 PHONE: 614-461-4664

**FLOODPLAIN IMPACT**

PROGRESS DRAWING NOT FOR CONSTRUCTION	2/5/25
	Proj. #
	<b>C1.0</b>
PRELIMINARY DRAWINGS	

**KORDA**  
 KORDA, NEMETH ENGINEERING  
 1650 WATERMARK DRIVE  
 SUITE 200  
 COLUMBUS, OHIO 43215  
 DESIGNED BY:  
 CHECKED BY:  
 PROJECT NUMBER: 2024-0417



**STAKING LEGEND**

- EXISTING**
- PL — PROPERTY LINE
  - RW — RIGHT-OF-WAY
  - CA — ROADWAY CENTERLINE
  - BL — SURVEY BASELINE
  - ▨ BUILDING/WALL
  - ▬ CURB AND GUTTER
  - ▬ CURB
  - ▬ PAVEMENT
  - ▬ WALK
  - X - X - FENCE
  - - - SETBACK
  - ESMT - EASEMENT
  - FLAG POLE
  - TB TRAFFIC BOLLARD
  - MAIL BOX
  - TEST BORE
  - SIGN
  - BUSH/SHRUB
  - DECIDUOUS TREE
  - CONIFEROUS TREE
  - TREE LINE
  - △ SURVEY CONTROL POINT
  - ⊕ BENCHMARK
  - MONUMENT FOUND, NO. 5 REBAR UNLESS OTHERWISE NOTED.
  - PAINTED WHEELCHAIR SYMBOL
- PROPOSED**
- ▨ BUILDING/WALL
  - ▬ CURB AND GUTTER PER DETAIL C/C1.02
  - ▬ STRAIGHT CURB PER DETAIL D/C1.02
  - ▬ PAVEMENT
  - ▬ WALK
  - PAINTED WHEELCHAIR SYMBOL
  - HC HANDICAPPED PARKING SIGN PER DETAIL K/C1.02
  - HEAVY DUTY ASPHALT PER DETAIL B/C1.02
  - LIGHT DUTY ASPHALT PER DETAIL A/C1.02
  - CONCRETE SIDEWALK PER DETAIL E/C1.02
  - CONCRETE PAVEMENT PER DETAIL J/C1.02

#	DATE	CHANGE DESCRIPTION

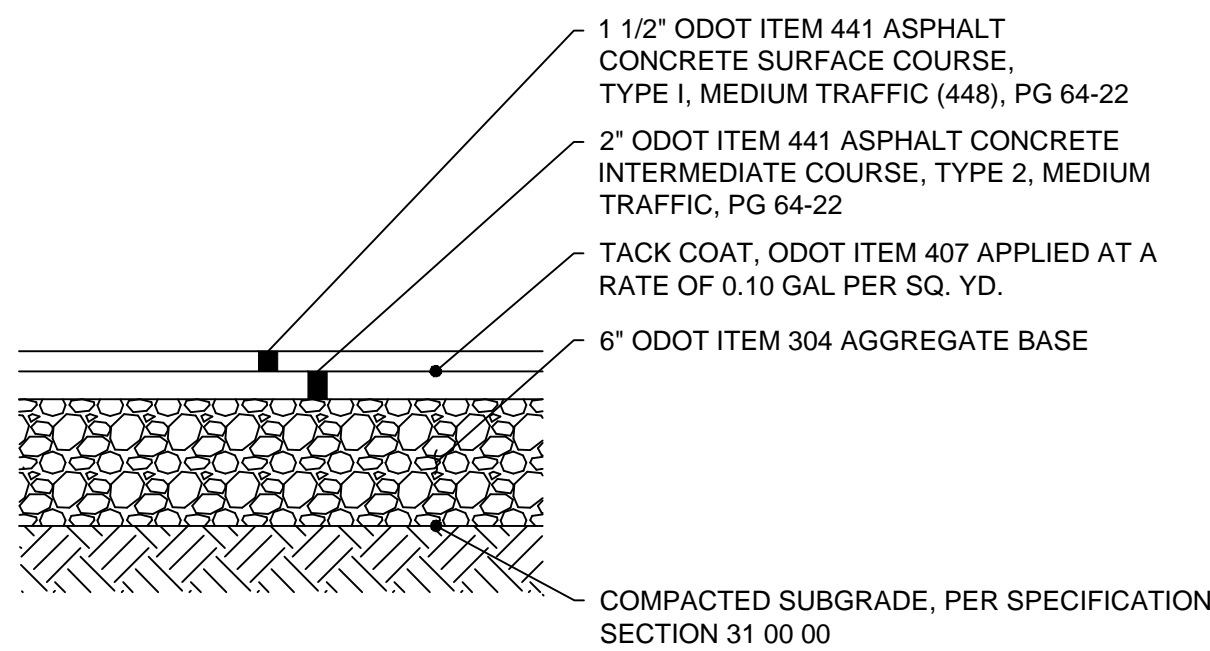


**Moody Nolan**  
 300 SPRUCE STREET  
 SUITE 300  
 COLUMBUS, OHIO 43215  
 PHONE: 614-461-4664

DRAWING TITLE:  
**SITE PLAN**

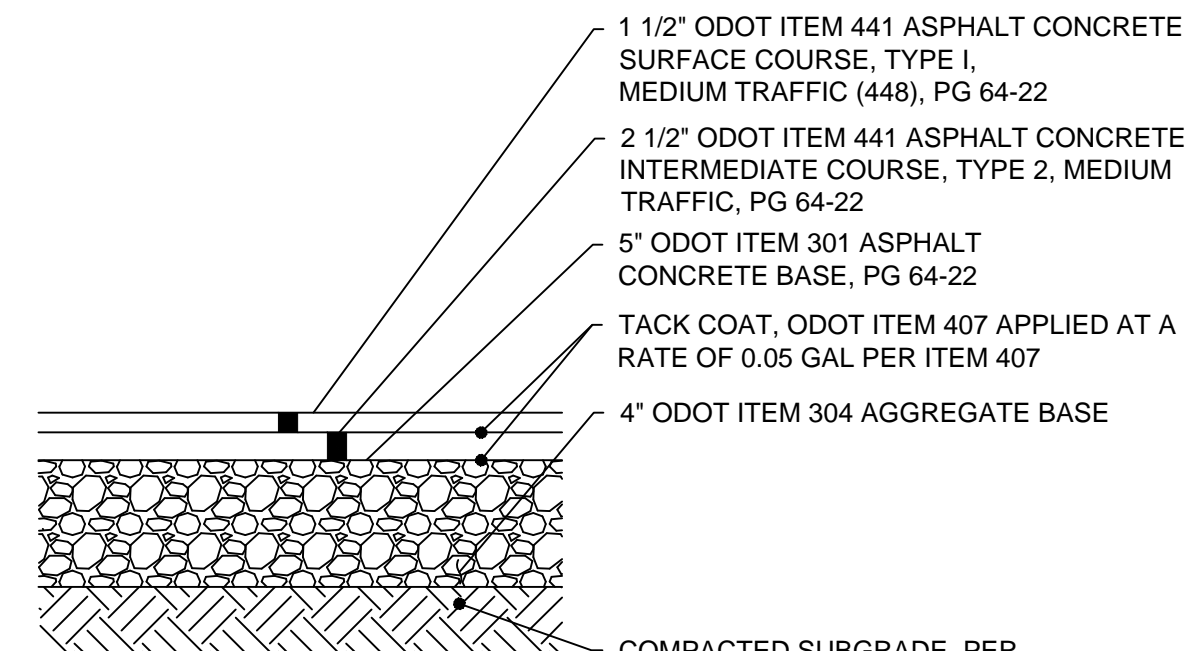
	2/5/25
	Proj. #
	<b>C1.01</b>
PRELIMINARY DRAWINGS	

**KORDA**  
 KORDA, NEMETH ENGINEERING  
 1650 WATERMARK DRIVE  
 SUITE 200  
 COLUMBUS, OHIO 43215  
 DESIGNED BY:  
 CHECKED BY:  
 PROJECT NUMBER: 2024-0417



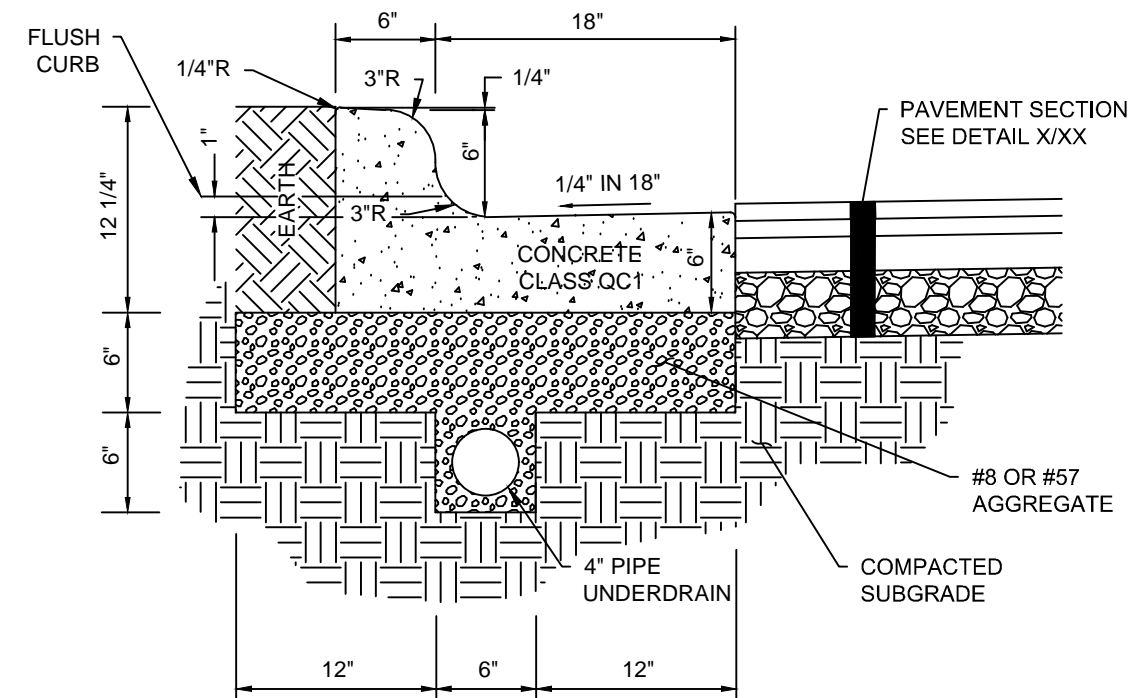
- NOTES:**
1. COMPOSE HOT MIX ASPHALT MIXTURE WITH AGGREGATE AND ASPHALT BINDER MEETING ODOT REQUIREMENTS.
  2. SUBMIT AN APPROVED JOB MIX FORMULA INCLUDING MIX TYPE PROPOSED FOR USE, AGGREGATE SOURCE, TYPE, AND GRADATION, PERCENT OF ASPHALT BINDER, AND UNIT WEIGHT OF THE MIXTURE.
  3. OBTAIN JOB MIX FORMULA APPROVAL BY PROVIDING A PREVIOUSLY ODOT APPROVED FORMULA "OR PROVIDE THE OWNER'S TESTING AGENCY WITH A MIX FORMULA FOR TESTING AND APPROVAL" "OR CONTRACT AN INDEPENDENT TESTING AGENCY TO PROVIDE TESTING AND WRITTEN APPROVAL OF THE FORMULA. THE AGENCY PERFORMING THE TESTING MUST BE LEVEL III BITUMINOUS CONCRETE APPROVED BY ODOT."
  4. "THE OWNER'S TESTING AGENCY WILL" PROVIDE QUALITY ASSURANCE TESTING IN ACCORDANCE WITH ODOT ITEM 448 AND SUPPLEMENTAL SPECIFICATION 1055. "EXCEPT THAT AN INDEPENDENT TESTING LABORATORY WILL PERFORM THE TESTING AND REPORT DATA TO THE OWNER'S REPRESENTATIVE. THE AGENCY PERFORMING THE TESTING MUST HAVE A CURRENT LEVEL I BITUMINOUS CONCRETE APPROVAL FROM ODOT."
  5. PROVIDE COMPACTION RANGING FROM 90 TO 97.9% OF THE AVERAGE MAXIMUM SPECIFIC GRAVITY FOR SURFACE COURSE AND 90 TO 96.9% FOR INTERMEDIATE COURSE. REMOVE AND REPLACE MATERIAL PLACED OUTSIDE OF SAID RANGES. PROVIDE REPLACEMENT PAVEMENT AND QUALITY ASSURANCE TESTING AT NO ADDITIONAL COST TO THE OWNER.

**A** **DETAIL**  
LIGHT DUTY ASPHALT PAVEMENT N.T.S.



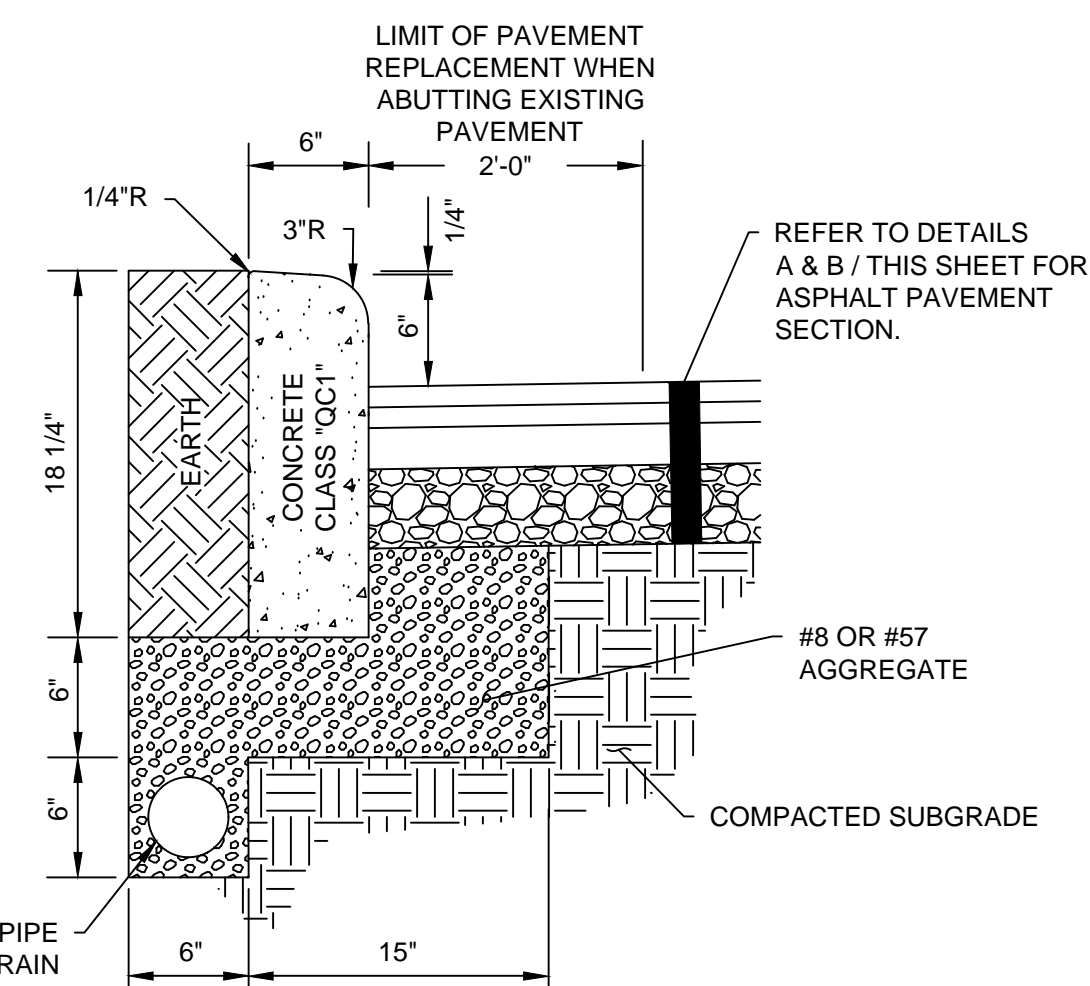
- NOTES:**
1. COMPOSE HOT MIX ASPHALT MIXTURE WITH AGGREGATE AND ASPHALT BINDER MEETING ODOT REQUIREMENTS.
  2. SUBMIT AN APPROVED JOB MIX FORMULA INCLUDING MIX TYPE PROPOSED FOR USE, AGGREGATE SOURCE, TYPE, AND GRADATION, PERCENT OF ASPHALT BINDER, AND UNIT WEIGHT OF THE MIXTURE.
  3. OBTAIN JOB MIX FORMULA APPROVAL BY PROVIDING A PREVIOUSLY ODOT APPROVED FORMULA "OR PROVIDE THE OWNER'S TESTING AGENCY WITH A MIX FORMULA FOR TESTING AND APPROVAL" "OR CONTRACT AN INDEPENDENT TESTING AGENCY TO PROVIDE TESTING AND WRITTEN APPROVAL OF THE FORMULA. THE AGENCY PERFORMING THE TESTING MUST BE LEVEL III BITUMINOUS CONCRETE APPROVED BY ODOT."
  4. "THE OWNER'S TESTING AGENCY WILL" PROVIDE QUALITY ASSURANCE TESTING IN ACCORDANCE WITH ODOT ITEM 448 AND SUPPLEMENTAL SPECIFICATION 1055. "EXCEPT THAT AN INDEPENDENT TESTING LABORATORY WILL PERFORM THE TESTING AND REPORT DATA TO THE OWNER'S REPRESENTATIVE. THE AGENCY PERFORMING THE TESTING MUST HAVE A CURRENT LEVEL I BITUMINOUS CONCRETE APPROVAL FROM ODOT."
  5. PROVIDE COMPACTION RANGING FROM 90 TO 97.9% OF THE AVERAGE MAXIMUM SPECIFIC GRAVITY FOR SURFACE COURSE AND 90 TO 96.9% FOR INTERMEDIATE COURSE. REMOVE AND REPLACE MATERIAL PLACED OUTSIDE OF SAID RANGES. PROVIDE REPLACEMENT PAVEMENT AND QUALITY ASSURANCE TESTING AT NO ADDITIONAL COST TO THE OWNER.

**B** **DETAIL**  
HEAVY DUTY ASPHALT PAVEMENT N.T.S.



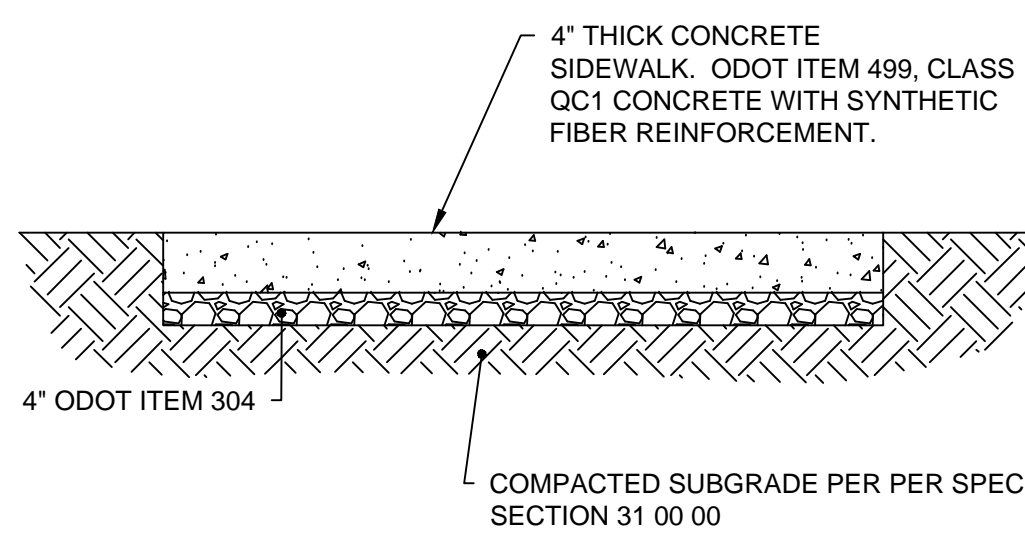
- NOTES:**
1. CURB & GUTTER SHALL CONFORM TO ODOT ITEM 609.
  2. ALL EXPOSED SURFACES OF CONCRETE CURB TO BE FLOATED AND BRUSH FINISHED, UNLESS PLACED BY A CURB MACHINE.
  3. PROVIDE JOINTS PER SPECIFICATION SECTION "02750" "32 13 00".

**C** **DETAIL**  
STANDARD CONCRETE COMBINED CURB & GUTTER N.T.S.



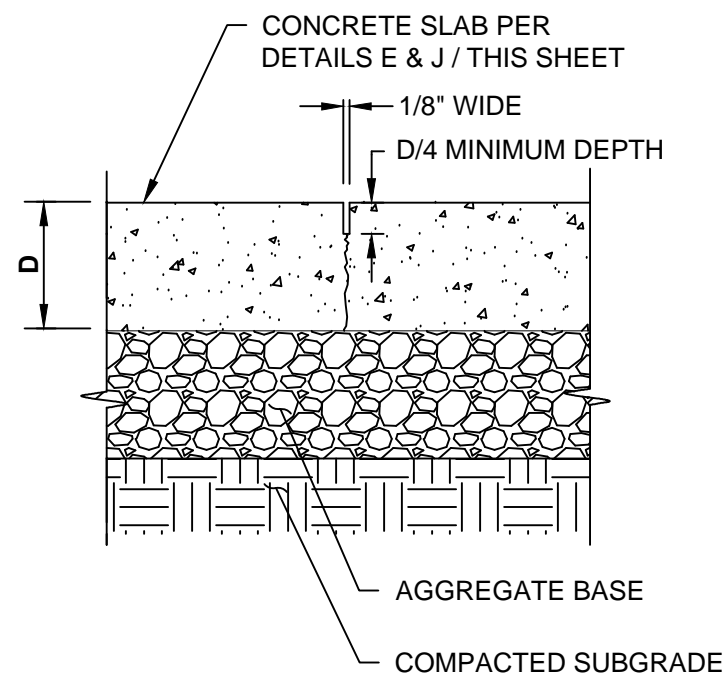
- NOTES:**
1. ALL EXPOSED SURFACES OF CONCRETE CURB TO BE FLOATED AND BRUSH FINISHED, UNLESS PLACED BY A CURB MACHINE.
  2. PROVIDE JOINTS PER SPECIFICATION SECTION "02750" "32 13 00".

**D** **DETAIL**  
STRAIGHT 18" CONCRETE CURB WITH UNDERDRAIN N.T.S.



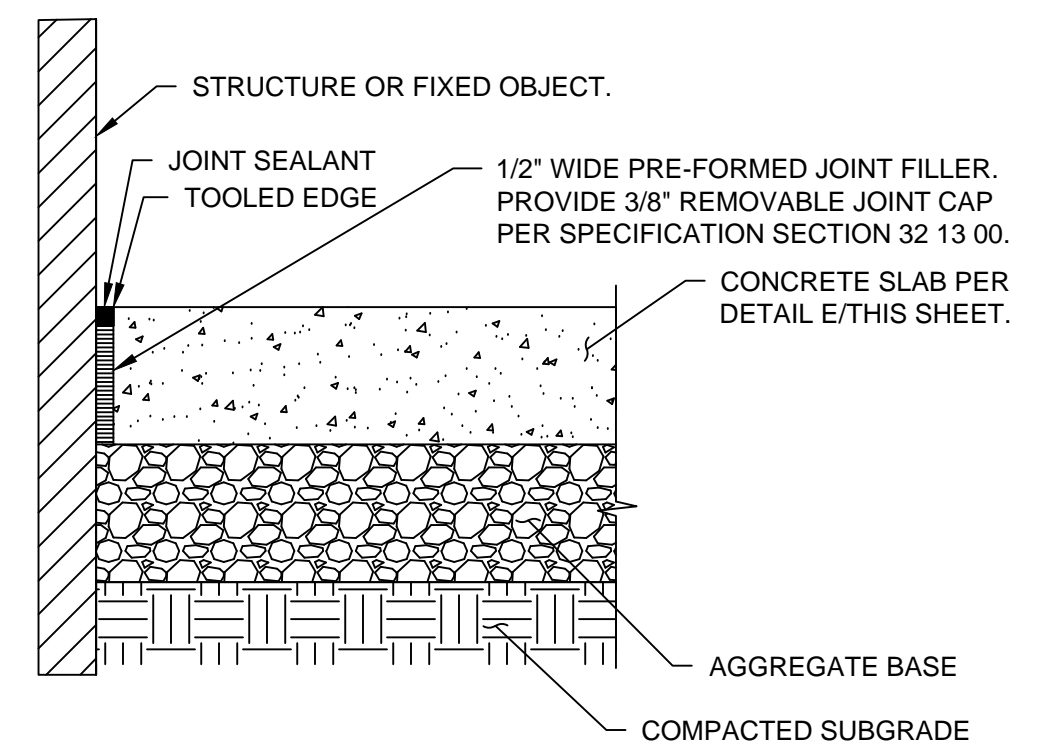
- NOTES:**
- CONCRETE WALKS TO HAVE SOFT BROOM FINISH PERPENDICULAR TO TRAFFIC FLOW (BUFF WASH FINISH). RUB OUT ALL TOOL MARKS. PROVIDE JOINTS AS INDICATED ON DRAWINGS. IN ABSENCE OF INFORMATION ON THE DRAWINGS, LOCATE AS SPECIFIED IN SECTION 32 13 00. LONGITUDINAL SLOPE SHALL NOT EXCEED 5%.
- A. SYNTHETIC FIBER REINFORCEMENT:** ASTM C1116-97 AND ASTM C1018-97. ACCEPTABLE PRODUCTS INCLUDE, BUT ARE NOT LIMITED TO:
1. NYCON NYLON FIBERS
  2. FORTA NYLO-MONO NYLON FIBERS
  3. FIBERMESH FIBERMIX STEALTH POLYPROPYLENE FIBERS
  4. GRACE POLYPROPYLENE FIBERS
- SYNTHETIC FIBER REINFORCEMENT SHALL BE USED IN STRICT ACCORDANCE WITH THE MANUFACTURER'S RECOMMENDATIONS. DOSAGE RATE SHALL BE AS RECOMMENDED BY THE MANUFACTURER, BUT NOT LESS THAN 1 POUND PER CUBIC YARD.
- B. CURING COMPOUND:** COMPLY WITH ASTM C309-98A, TYPE 1, CLASS B (CLEAR), EXCEPT MOISTURE LOSS NOT TO EXCEED 0.40 KG/SQ M. IN 72 HOURS. COMPOUND SHALL COMPLY WITH EPA'S VOC REQUIREMENTS. APPLY AT THE MANUFACTURER'S WRITTEN RECOMMENDED APPLICATION RATE. COMPLETELY REMOVE CURING COMPOUND PRIOR TO APPLICATION OF PENETRATING SEALER.
- C. PENETRATING SEALER:** ACCEPTABLE PRODUCTS INCLUDE, BUT ARE NOT LIMITED TO:
1. L&M CONSTRUCTION CHEMICALS - AQUAPEL PLUS 40
  2. PROSOCCO - SALTGUARD WB
  3. HULS AMERICA INC. - CHEM-TRETE BSM 40
  4. MASTER BUILDERS INC. - MASTERSEAL SL 40
  5. LYMTAL INTERNATIONAL - ISO-FLEX 618-50 WB
  6. BASF - ENVIROSEAL 40 OR HYDROZOD SILANE 40
  7. TEX-COTE - RAINSTOPPER RS140

**E** **DETAIL**  
CONCRETE SIDEWALK N.T.S.



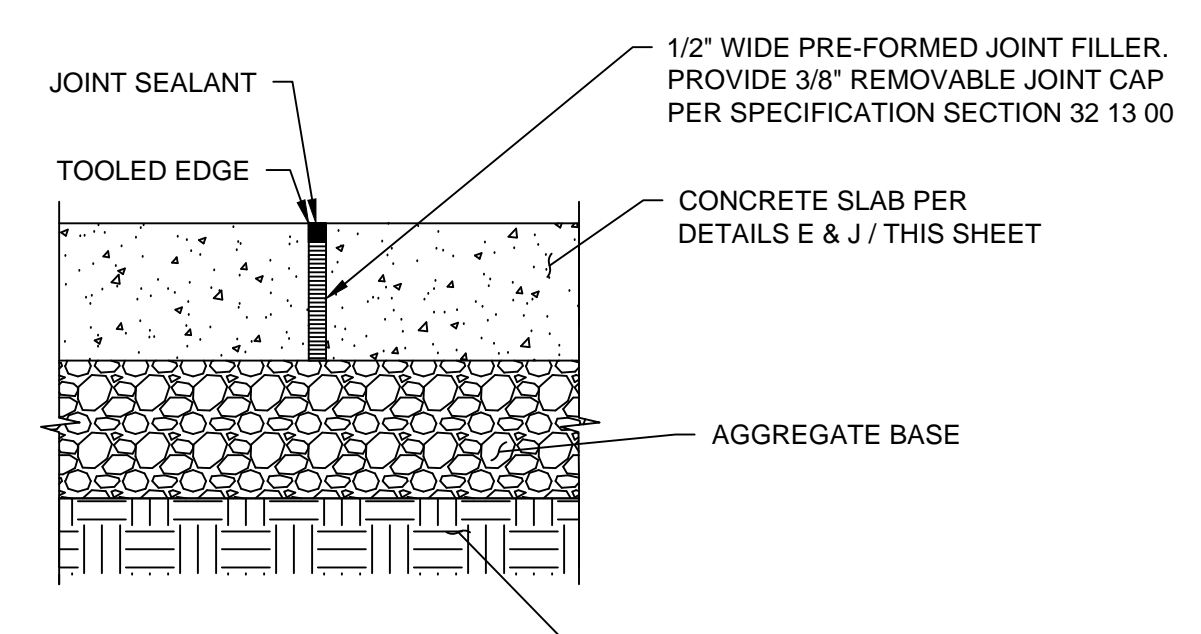
- NOTES:**
1. PLACE CONTROL JOINTS WITHIN 8 HOURS OF CONCRETE PLACEMENT AND AT LOCATIONS INDICATED ON THE STAKING PLAN. IF JOINTS ARE NOT SHOWN ON STAKING PLAN, PROVIDE AT LOCATIONS INDICATED BELOW:
    - A. SPACING (IN FEET) SHALL BE BETWEEN 2 TO 2-1/2 TIMES SLAB THICKNESS (IN INCHES) IN BOTH DIRECTIONS (I.E. 4" SLAB SHALL HAVE JOINT SPACING OF 8-10 FEET).
    - B. GRID OF CONTROL JOINTS SHALL BE APPROXIMATELY SQUARE WITH LONGEST SIDE TO BE NOT LONGER THAN 1.5 TIMES THE SHORTEST SIDE (I.E. 4 FOOT WIDE WALK SHALL HAVE JOINT SPACING AT 4-6 FEET).

**F** **DETAIL**  
SAW CUT CONCRETE CONTROL JOINT-  
LONGITUDINAL OR TRANSVERSE N.T.S.



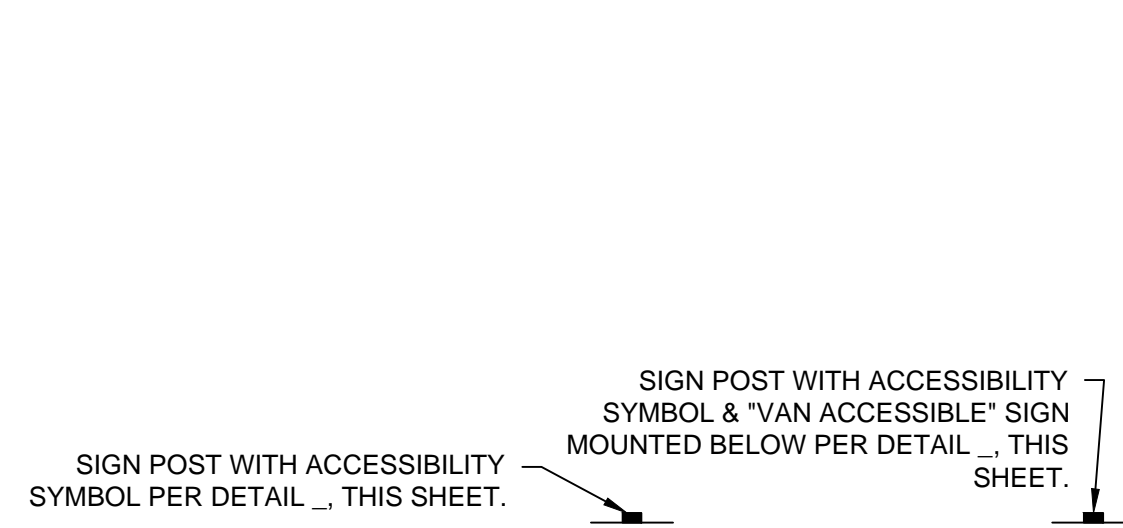
- NOTES:**
1. PLACE ISOLATION JOINTS WHERE NEW CONCRETE SLAB ABUTS STRUCTURES OR FIXED OBJECTS INCLUDING: BUILDINGS, WALLS, COLUMNS, POLE BASES, CURBS, CATCH BASINS, EXISTING CONCRETE, OR AS NOTED ON THE STAKING PLAN.
  2. PROVIDE AT FORMED EDGE OF PREVIOUSLY POURED SLABS. SEAL JOINT WITH JOINT SEALANT. SEE SPECIFICATION SECTION 32 13 00.
  3. SUBMIT SAMPLE FOR COLOR APPROVAL. PRE-FORMED JOINT FILLER - NON-IMPREGNATED TYPE. CLOSED CELL RESILIENT POLYETHYLENE FOAM, 1/2" THICK UNLESS OTHERWISE NOTED. CERAMAR FLEXIBLE FOAM EXPANSION JOINT BY W.R. MEADOWS OR EQUAL MEETING THE REQUIREMENTS OF ASTM D 1752 SECTIONS 5.1 THROUGH 5.4. REFER TO SPECIFICATION SECTION 32 13 00.

**G** **DETAIL**  
CONCRETE ISOLATION JOINT N.T.S.



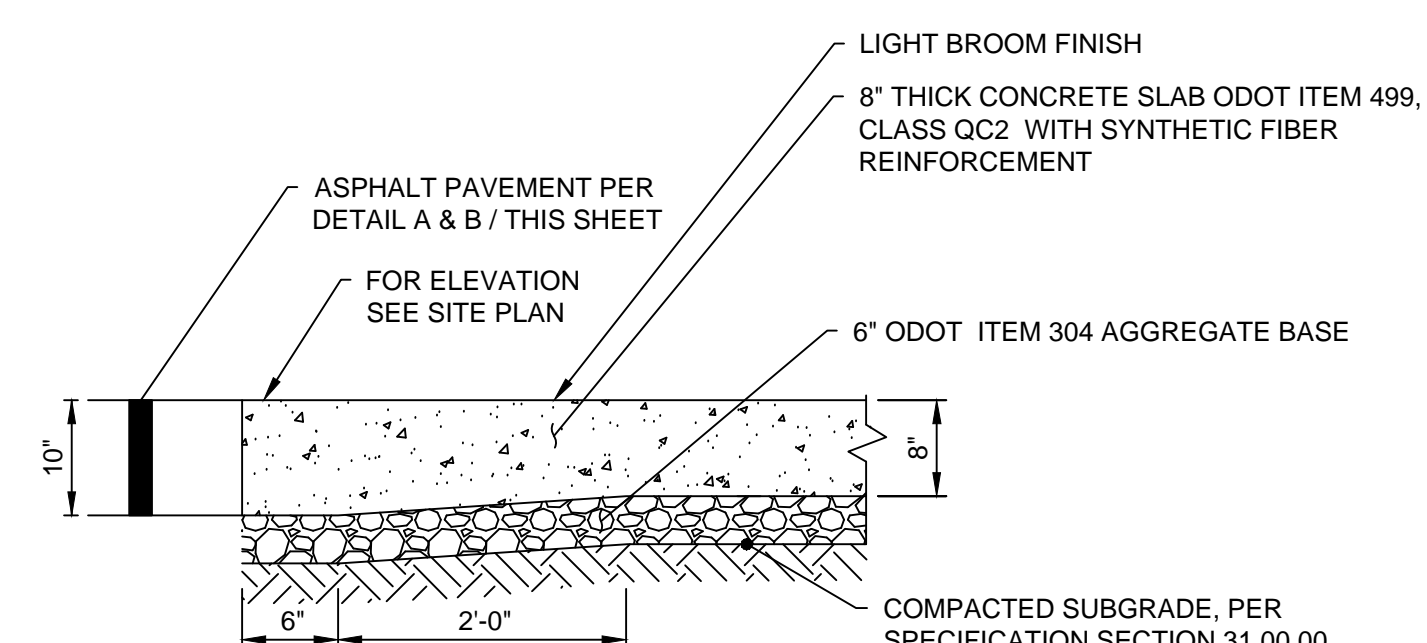
- NOTES:**
1. PROVIDE WHEN SPECIFICALLY SHOWN ON THE DRAWINGS OR WHEN PLACING CONCRETE DURING TEMPERATURES LESS THAN 40°F. REFER TO SPECIFICATION SECTION 32 13 00 FOR LOCATION.
  2. SEAL JOINT WITH JOINT SEALANT. SEE SPECIFICATION SECTION 32 13 00.
  3. SUBMIT SAMPLE FOR COLOR APPROVAL. PRE-FORMED JOINT FILLER - NON-IMPREGNATED TYPE. CLOSED CELL RESILIENT POLYETHYLENE FOAM, 1/2" THICK UNLESS OTHERWISE NOTED. CERAMAR FLEXIBLE FOAM EXPANSION JOINT BY W.R. MEADOWS OR EQUAL MEETING THE REQUIREMENTS OF ASTM D 1752 SECTIONS 5.1 THROUGH 5.4. REFER TO SPECIFICATION SECTION 32 13 00.

**H** **DETAIL**  
CONCRETE EXPANSION JOINT N.T.S.



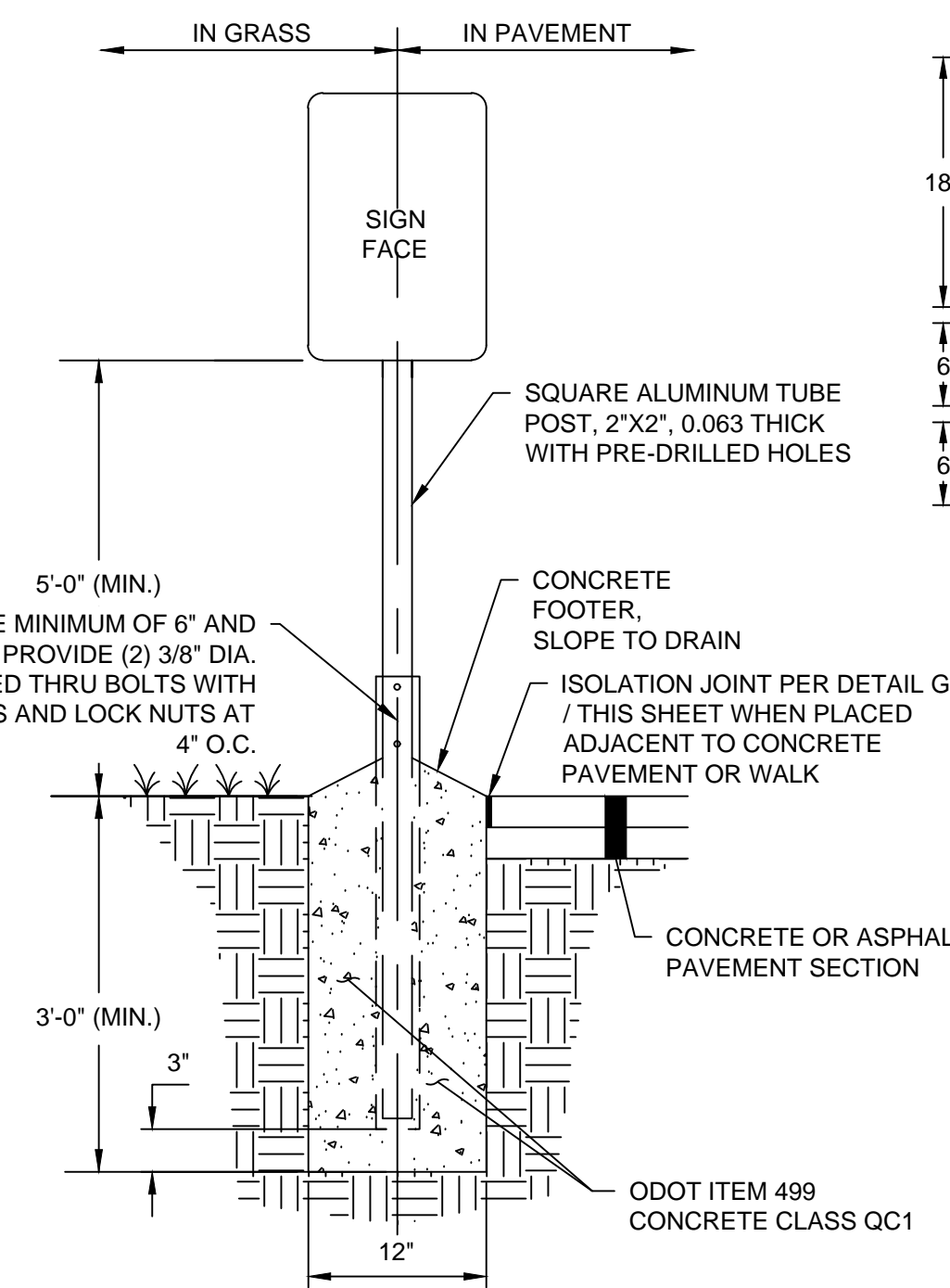
- NOTES:**
1. PAVEMENT SHALL HAVE A MAXIMUM 2.00% SLOPE IN ALL DIRECTIONS IN THE AREA OF HANDICAP PARKING AND ASSOCIATED STRIPING.
  2. ALL CURB RAMPS AND SIDEWALKS SHALL BE CONSTRUCTED IN FULL COMPLIANCE WITH THE REQUIREMENTS OF THE AMERICAN WITH DISABILITIES ACT (ADA) OF 1990, INCLUDING ALL SUPPLEMENTS OR REPLACEMENT DRAWINGS ISSUED THERETO.
  3. HANDICAP PARKING SIGN SHALL CONFORM WITH CURRENT STATE AND LOCAL CODES AND REGULATIONS.
  4. TRANSITION FROM FLUSH CURB TO FULL HEIGHT CURB AS DESIGNATED ON GRADING PLAN. SLOPE WALK TO MATCH CURB.

**I** **DETAIL**  
ADA PARKING STRIPING N.T.S.



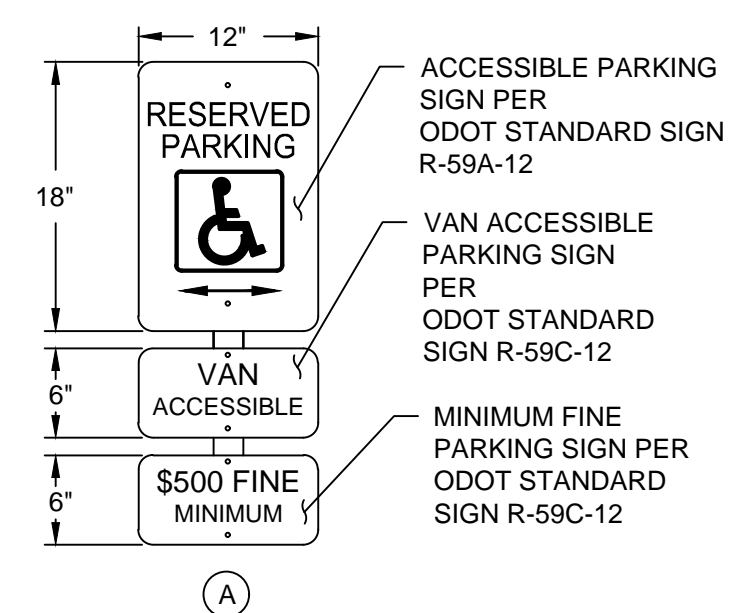
- NOTES:**
1. PROVIDE JOINTS AS INDICATED ON DRAWINGS. IN ABSENCE OF INFORMATION ON THE DRAWINGS, LOCATE AS SPECIFIED IN SECTION 32 13 00.
  2. PROVIDE CONTROL AND ISOLATION JOINTS PER DETAILS F AND G, THIS SHEET.
  3. SYNTHETIC FIBER REINFORCEMENT: ASTM C1116/C1116M-10A(2015). ACCEPTABLE PRODUCTS OR APPROVED EQUAL:
    - A. NYCON NYLON OR PROCON-NI POLYPROPYLENE FIBER NYLON FIBERS BY NYCON.
    - B. NYLO-MONO NYLON FIBERS OR MIGHTY-MONO POLYPROPYLENE FIBERS BY FORTA
    - C. FIBERMESH 150 POLYPROPYLENE FIBERS BY PROPEX.
    - D. SINTA F19 OR SINTA M2219 BY GCP APPLIED TECHNOLOGIES
    - E. PSI FIBERSTRAND 150 BY EUCLID.
  4. SYNTHETIC FIBER REINFORCEMENT SHALL BE USED IN STRICT ACCORDANCE WITH THE MANUFACTURER'S RECOMMENDATIONS. DOSAGE RATE SHALL BE AS RECOMMENDED BY THE MANUFACTURER, BUT NOT LESS THAN 1 POUND PER CUBIC YARD.
  5. DISSSIPATING CURING COMPOUND: COMPLY WITH ASTM C309-98A, TYPE 1, CLASS B (CLEAR), EXCEPT MOISTURE LOSS NOT TO EXCEED 0.40 KG/SQ M. IN 72 HOURS. COMPOUND SHALL COMPLY WITH EPA'S VOC REQUIREMENTS. APPLY AT THE MANUFACTURER'S WRITTEN RECOMMENDED APPLICATION RATE. COMPLETELY REMOVE CURING COMPOUND PRIOR TO APPLICATION OF PENETRATING SEALER.
  6. PENETRATING SEALER: ACCEPTABLE PRODUCTS OR APPROVED EQUAL:
    - A. L&M CONSTRUCTION CHEMICALS - AQUAPEL PLUS 40
    - B. PROSOCCO - SALTGUARD WB
    - C. HULS AMERICA INC. - CHEM-TRETE BSM 40
    - D. MASTER BUILDERS INC. - MASTERSEAL SL 40
    - E. LYMTAL INTERNATIONAL - ISO-FLEX 618-50 WB
    - F. BASF - ENVIROSEAL 40 OR HYDROZOD SILANE 40
    - G. TEX-COTE - RAINSTOPPER RS140
  7. IF CONCRETE INSTALLED OCTOBER-MARCH, WAIT UNTIL APRIL-SEPTEMBER TO APPLY PENETRATING SEALER. IF SCHEDULE DOES NOT ALLOW FOR APPLICATION OF SEALER, PROVIDE CREDIT FOR NON-PERFORMANCE.

**J** **DETAIL**  
HEAVY DUTY CONCRETE SLAB N.T.S.

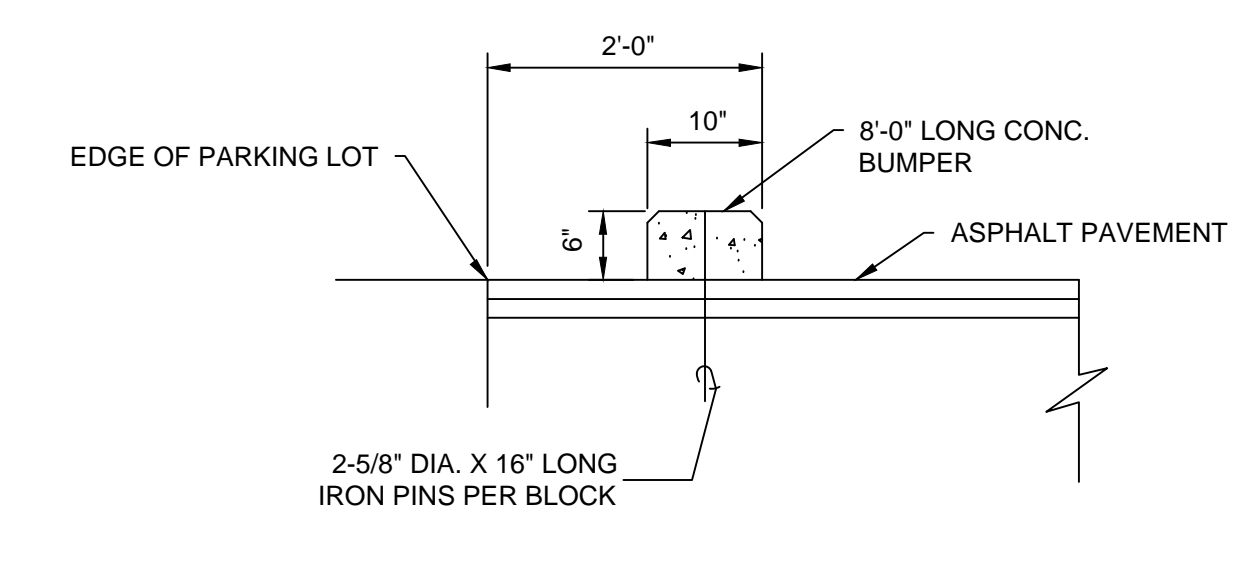


- NOTES:**
1. PROVIDE SIGN IN ACCORDANCE WITH ODOT ITEM 630.
  2. PROVIDE 0.063 THICK, FLAT ALUMINUM SIGN PANELS.
  3. PROVIDE REFLECTIVE FINISH ON SIGN.
  4. PROVIDE PERMANENT WEATHERPROOF ALUMINUM CAP ON POST TOP.
  5. PROVIDE "VAN ACCESSIBLE" SIGN WHERE NOTED ON DRAWINGS.
  6. ATTACH SIGNS WITH UNISTRUT UNIVERSAL DRIVE RIVET OR APPROVED EQUAL.
  7. ACCESSIBLE SIGNAGE TO BE AS SHOWN UNLESS OTHERWISE SPECIFIED BY LOCAL CODE.

**K** **DETAIL**  
PARKING SIGNS N.T.S.



**L** **DETAIL**  
BUMPER BLOCK N.T.S.



#	DATE	CHANGE DESCRIPTION

**THE HEIGHTS ON MAIN**  
COLUMBUS METROPOLITAN HOUSING AUTHORITY  
7221 U.S. HWY 40, REYNOLDSBURG, OHIO  
COMMUNITY ORIENTED COLLABORATION

300 SPRUCE STREET  
SUITE 300  
COLUMBUS, OHIO 43215  
PHONE: 614-461-4664

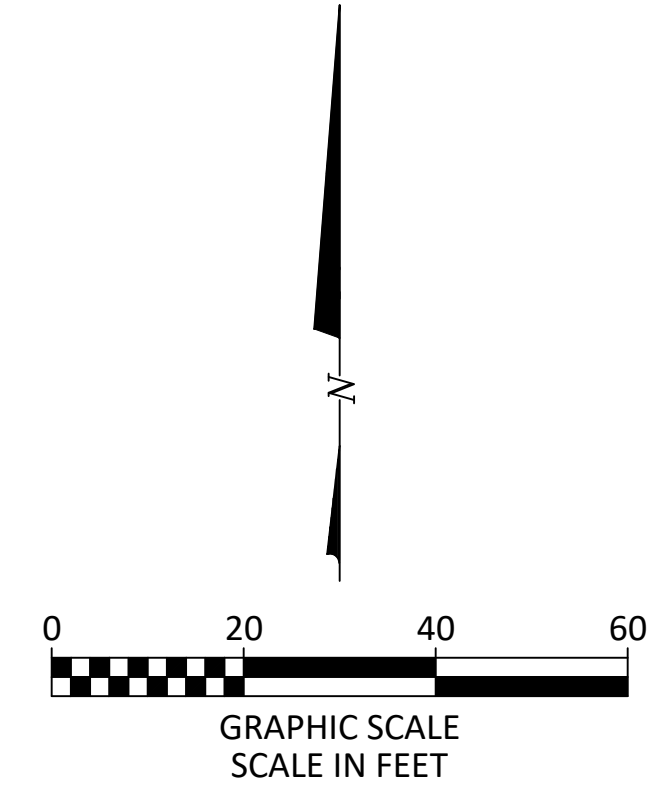
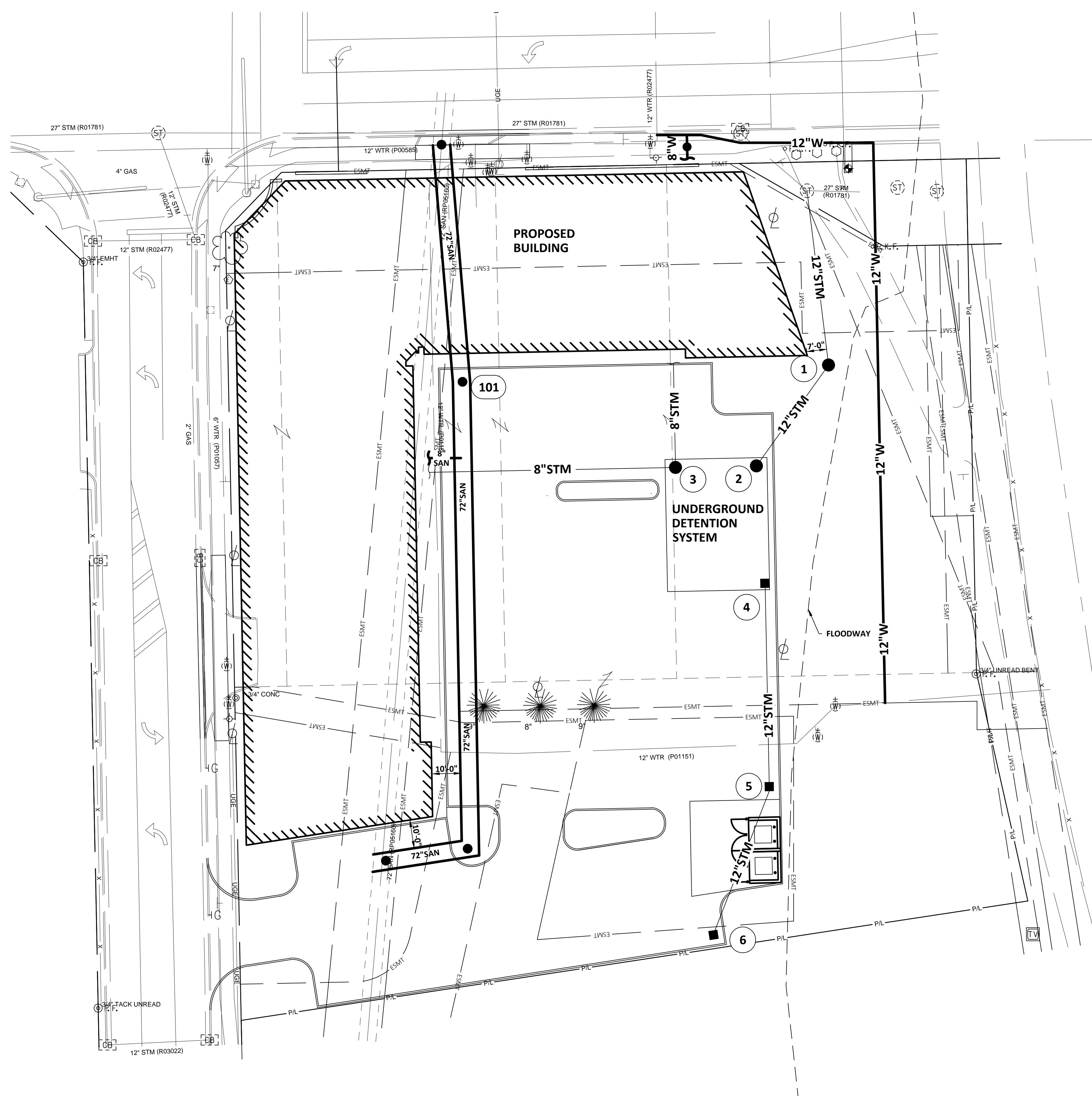
**Moody Nolan**

DRAWING TITLE:

**STAKING DETAILS**

	2/5/25
	Proj. #
	<b>C1.02</b>
PRELIMINARY DRAWINGS	

**KORDA**  
KORDA NEMETH ENGINEERING  
1650 WATERMARK DRIVE  
SUITE 200  
COLUMBUS, OHIO 43215  
DRAWN BY:  
DESIGNED BY:  
CHECKED BY:  
PROJECT NUMBER: 2024-0417



**UTILITY LEGEND**

- PROPOSED**
- W — WATER LINE
  - F — FIRE PROTECTION SERVICE LINE
  - STM — STORM SEWER
  - UD — UNDERDRAIN
  - SAN — SANITARY SEWER
  - ] — CUT AND PLUG EXISTING UTILITY
  - (AB) — ABANDON EXISTING UTILITY
  - (R) — REMOVE EXISTING UTILITY
  - W — FIRE HYDRANT
- ⊙ PIV
  - ⊙ POST INDICATING VALVE
  - ⊙ FIRE DEPARTMENT CONNECTION
  - ⊙ CLEAN OUT
  - ⊙ MANHOLE
  - ⊙ REMOVE EX. STRUCTURE
  - ① 101 STRUCTURE NUMBER
  - ▨ REMOVE AND REPLACE PAVEMENT IN KIND

**GENERAL NOTES:**

1. DIMENSIONS AND COORDINATES ARE FROM FACE OF CURB OR EXTERIOR FACE OF BUILDING, UNLESS OTHERWISE NOTED.
2. EXTEND UTILITIES TO WITHIN 5' OF FACE OF BUILDING, UNLESS OTHERWISE NOTED. COORDINATE EXACT LOCATION WITH PLUMBING CONTRACTOR. FINAL CONNECTION BY PLUMBING CONTRACTOR.
3. REFER TO SHEETS FOR STORM SEWER INFORMATION.
4. MAINTAIN MINIMUM 4'-0" COVER OVER ALL WATERLINES. REFER TO SHEET FOR PROFILE.
5. MAINTAIN MINIMUM 18" VERTICAL CLEARANCE FROM THE OUTSIDE OF ANY WATERLINE PIPE TO THE OUTSIDE OF ANY STORM OR SANITARY SEWER.
6. PROVIDE THRUST BLOCKS OR RESTRAINED MECHANICAL JOINT PIPE AT EACH VALVE, TEE, FITTING, OR CHANGE IN DIRECTION OF WATERLINE.
7. REFER TO CITY OF REYNOLDSBURG STANDARD DRAWINGS FOR TYPICAL FIRE HYDRANT INSTALLATION DETAILS.
8. ROOF DRAINS, FOUNDATION DRAINS, AND OTHER CLEAN WATER CONNECTIONS TO THE SANITARY SEWER ARE PROHIBITED.
9. CONNECTION TO EXISTING WATER MAINS SHALL NOT BE PERFORMED UNTIL THE NEW LINES HAVE BEEN SANITIZED AND ALL TESTS HAVE BEEN COMPLETED AS SPECIFIED BY THE CITY OF REYNOLDSBURG AND THESE CONTRACT DOCUMENTS.
10. ALL COORDINATES AND ELEVATIONS BASED ON SURVEY PERFORMED BY CWDG.
11. WHERE PLANS PROVIDE FOR A PROPOSED UTILITY TO BE CONNECTED TO, OR CROSS OVER, OR UNDER AN EXISTING UNDERGROUND UTILITY, THE CONTRACTOR SHALL LOCATE THE EXISTING PIPES OR UTILITIES, BOTH AS TO LINE AND GRADE BEFORE STARTING TO LAY THE PROPOSED UTILITY. THESE LOCATIONS ARE NOTED THUS: EXPOSE. IF IT IS DETERMINED THAT THE ELEVATION OF THE EXPOSED UTILITY DIFFERS FROM THE PLAN ELEVATION, RESULTS IN A CHANGE IN THE PLAN SEWER SLOPE, OR WILL INTERSECT AN EXISTING UTILITY AS SHOWN ON THE PLAN, THE ENGINEER SHALL BE NOTIFIED BEFORE STARTING CONSTRUCTION OF ANY PORTION OF THE PROPOSED UTILITY WHICH WILL BE AFFECTED BY THE VARIANCE IN THE EXISTING ELEVATIONS.
12. SUPPORT AND PROTECT ALL UTILITIES EXPOSED DURING EXCAVATION AND TRENCHING.
13. ANY REQUIRED WATERLINE SHUT-DOWNS SHALL BE COORDINATED WITH THE OWNER AND/OR THE CITY.

**CODED NOTES:**

1. CAP AND MARK FOR FUTURE CONNECTION. COORDINATE FINAL LOCATION AND ELEVATION WITH PLUMBING CONTRACTOR. FINAL CONNECTION BY PLUMBING CONTRACTOR.
2. BACKFILL WITH COMPACTED BACKFILL PER CMSC ITEM 911
3. BACKFILL WITH COMPACTED GRANULAR MATERIAL PER CMSC ITEM 912.
4. CONCRETE ENCASEMENT PER CMSC ITEM 910
5. INSTALL REINFORCED CONCRETE PIPE PER CMSC ITEM 706.02.
6. SEWER PIPE WITH WATERTIGHT JOINTS PER CMSC ITEM 901.15
7. BACKFILL WITH TYPE I FLOWABLE CONTROL DENSITY FILL PER ITEM 613.

#	DATE	CHANGE DESCRIPTION



**Moody Nolan**  
 300 SPRUCE STREET  
 SUITE 300  
 COLUMBUS, OHIO 43215  
 PHONE: 614-461-4664


**SITE UTILITY PLAN**

	2/5/25
	Proj. #
	<b>C3.01</b>
PRELIMINARY DRAWINGS	

**KORDA**  
 KORDA, NEMETH ENGINEERING  
 1650 WATERMARK DRIVE  
 SUITE 200  
 COLUMBUS, OHIO 43215  
 DRAWN BY:  
 DESIGNED BY:  
 CHECKED BY:  
 PROJECT NUMBER: 2024-0417




Conceptual Rendering in Progress

 Moody Nolan

## CMHA The Heights on Main

Conceptual Rendering

 Moody Nolan



CMHA The Heights on Main

Conceptual Rendering

