



RYZE CLAIM SOLUTIONS

RYZE Claim Solutions
888-898-RYZE Phone
877-839-8151 Fax

Insured: Columbus Metropolitan Housing Authority
Property: 1420 Greenck Rd.
Columbus, OH 43228

Claim Rep.: THOMAS COCKRELL,CPCLA
Company: RYZE CLAIM SOLUTIONS
Business: 1601 W.FIFTH AVE.# 105
COLUMBUS, OH 43212

Business: (866) 561-7872
E-mail: tom.cockrell@ryzeclaims.com

Estimator: THOMAS COCKRELL,CPCLA
Company: RYZE CLAIM SOLUTIONS
Business: 1601 W.FIFTH AVE.# 105
COLUMBUS, OH 43212

Business: (866) 561-7872
E-mail: tom.cockrell@ryzeclaims.com

Reference:
Company: HOUSING AUTHORITY PROPERTY
INSURANCE A MUTUAL COMPANY
Business: P.O.BOX 189
CHESHIRE, CT 06410

Business: (203) 272-8220

Claim Number: A8BT7

Policy Number: HAPI-572-1916652019

Type of Loss: Fire

Date Contacted: 7/16/2019

Date of Loss: 7/9/2019

Date Inspected: 7/18/2019

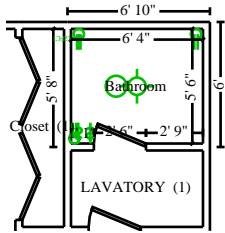
Date Received: 7/16/2019

Date Entered: 7/25/2019 9:13 AM

Price List: OHCO8X_JUL19
Restoration/Service/Remodel

Estimate: 19-032282

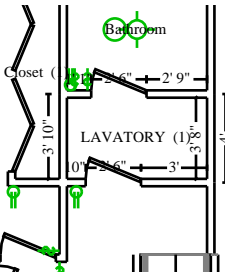
19-032282
SECOND FKLOOR
Main Level



Bathroom

Height: 8'

189.33 SF Walls	34.83 SF Ceiling
224.17 SF Walls & Ceiling	34.83 SF Floor
3.87 SY Flooring	23.67 LF Floor Perimeter
23.67 LF Ceil. Perimeter	



Subroom: LAVATORY (1)

Height: 8'

160.00 SF Walls	23.22 SF Ceiling
183.22 SF Walls & Ceiling	23.22 SF Floor
2.58 SY Flooring	20.00 LF Floor Perimeter
20.00 LF Ceil. Perimeter	

DESCRIPTION

QTY

1. Contents - move out then reset	1.00 EA
2a. Remove 5/8" drywall - hung, taped, floated, ready for paint	58.06 SF
2b. 5/8" drywall - hung, taped, floated, ready for paint	58.06 SF
3a. Remove Batt insulation - 10" - R30 - unfaced batt	58.06 SF
3b. Batt insulation - 10" - R30 - unfaced batt	58.06 SF
4. Seal truss system - up to 5/12	58.06 SF
5. Seal stud wall for odor control (shellac)	349.33 SF
6a. Remove Batt insulation - 4" - R11 - paper faced	40.00 SF
6b. Batt insulation - 4" - R11 - paper faced	40.00 SF
7a. Remove 1/2" drywall - hung, taped, floated, ready for paint	349.33 SF
7b. 1/2" drywall - hung, taped, floated, ready for paint	349.33 SF
8. Seal/prime then paint part of the walls and ceiling (2 coats)	356.39 SF
9a. Remove Underlayment - 1/4" lauan/mahogany plywood	58.06 SF
9b. Underlayment - 1/4" lauan/mahogany plywood	58.06 SF
10a. Remove Tile - vinyl composition	58.06 SF
10b. Tile - vinyl composition	58.06 SF
11a. Remove Cove base molding - rubber or vinyl, 4" high	43.67 LF
11b. Cove base molding - rubber or vinyl, 4" high	43.67 LF



RYZE CLAIM SOLUTIONS

RYZE Claim Solutions
888-898-RYZE Phone
877-839-8151 Fax

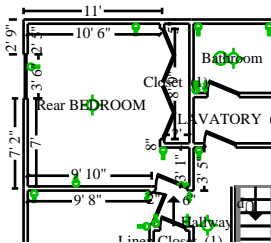
CONTINUED - Bathroom

DESCRIPTION	QTY
12a. Remove Interior door unit	2.00 EA
12b. Interior door unit	2.00 EA
13. Paint door slab only - 2 coats (per side)	2.00 EA
14. Detach & Reset Door knob - interior	2.00 EA
15. Paint door/window trim & jamb - 2 coats (per side)	4.00 EA
16a. Remove Medicine cabinet	1.00 EA
16b. Medicine cabinet	1.00 EA
17a. Remove Light bar - 4 lights	1.00 EA
17b. Light bar - 4 lights	1.00 EA
18a. Remove Towel bar	2.00 EA
18b. Towel bar	2.00 EA
19a. Remove Tile shower - up to 60 SF	1.00 EA
19b. Tile shower - up to 60 SF	1.00 EA
20a. Remove Tub/shower faucet	1.00 EA
20b. Tub/shower faucet	1.00 EA
21a. Remove Vanity	3.00 LF
21b. Vanity	3.00 LF
22. Rough in plumbing - includes supply and waste lines	58.06 SF
23a. Remove Bathtub	1.00 EA
23b. Bathtub	1.00 EA
24a. Remove Vanity top - one sink - cultured marble	3.00 LF
24b. Vanity top - one sink - cultured marble	3.00 LF
25. Sink faucet - Bathroom	1.00 EA
26a. Remove Toilet	1.00 EA
26b. Toilet	1.00 EA
27. Toilet seat	1.00 EA
28a. Remove Light fixture	1.00 EA
28b. Light fixture	1.00 EA
FRONT LAVATORY	
29a. Remove 110 volt copper wiring run and box - rough in only	3.00 EA
29b. 110 volt copper wiring run and box - rough in only	3.00 EA
30a. Remove 110 volt copper wiring run, box and switch	2.00 EA
30b. 110 volt copper wiring run, box and switch	2.00 EA

CONTINUED - Bathroom

DESCRIPTION	QTY
31a. Remove Bathroom ventilation fan w/light	1.00 EA
31b. Bathroom ventilation fan w/light	1.00 EA
32a. Remove Ground fault interrupter (GFI) outlet	1.00 EA
32b. Ground fault interrupter (GFI) outlet	1.00 EA
33a. Remove 110 volt copper wiring run, box and outlet	2.00 EA
33b. 110 volt copper wiring run, box and outlet	2.00 EA
34. Deodorize building - Hot thermal fog	464.44 CF
35. Final cleaning - construction - Residential	58.06 SF

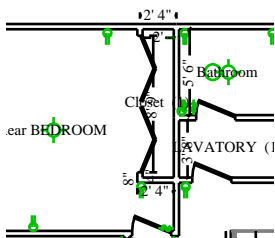
NOTES:



Rear BEDROOM

Height: 8'

412.00 SF Walls	142.82 SF Ceiling
554.82 SF Walls & Ceiling	142.82 SF Floor
15.87 SY Flooring	51.50 LF Floor Perimeter
51.50 LF Ceil. Perimeter	



Subroom: Closet (1)

Height: 8'

184.00 SF Walls	19.00 SF Ceiling
203.00 SF Walls & Ceiling	19.00 SF Floor
2.11 SY Flooring	23.00 LF Floor Perimeter
23.00 LF Ceil. Perimeter	

DESCRIPTION	QTY
36. Contents - move out then reset - Large room	1.00 EA
37a. Remove 1/2" drywall - hung, taped, floated, ready for paint	48.00 SF



RYZE CLAIM SOLUTIONS

RYZE Claim Solutions
888-898-RYZE Phone
877-839-8151 Fax

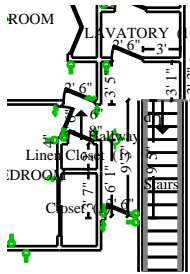
CONTINUED - Rear BEDROOM

DESCRIPTION	QTY
37b. 1/2" drywall - hung, taped, floated, ready for paint	48.00 SF
38. Seal stud wall for odor control (shellac)	48.00 SF
39. Seal truss system (shellac) - 6 to 8/12	161.82 SF
ACCESS FROM HALL AND BATH	
40. Seal floor or ceiling joist system (shellac)	161.82 SF
41. Seal attic framing (shellac) - 6 to 8/12	161.82 SF
42a. Remove Batt insulation - 4" - R15 - paper faced	48.00 SF
42b. Batt insulation - 4" - R15 - paper faced	48.00 SF
43. Seal the ceiling w/latex based stain blocker - two coats	161.82 SF
44. Paint the walls - two coats	596.00 SF
45. Mask and prep for paint - plastic, paper, tape (per LF)	74.50 LF
46a. Remove Cove base molding - rubber or vinyl, 4" high	74.50 LF
46b. Cove base molding - rubber or vinyl, 4" high	74.50 LF
47a. Remove Underlayment - 1/4" lauan/mahogany plywood	161.82 SF
47b. Underlayment - 1/4" lauan/mahogany plywood	161.82 SF
48. Tile - vinyl composition	161.82 SF
49a. Remove Ductwork - hot or cold air (per room)	1.00 EA
49b. Ductwork - hot or cold air (per room)	1.00 EA
50a. Remove Smoke detector	1.00 EA
50b. Smoke detector	1.00 EA
51a. Remove Interior door unit	1.00 EA
51b. Interior door unit	1.00 EA
52. Paint door/window trim & jamb - 2 coats (per side)	46.00 EA
53. Door knob - interior	1.00 EA
54. Paint door slab only - 2 coats (per side)	2.00 EA
55a. Remove Bypass (sliding) door set - birch	1.00 EA
55b. Bypass (sliding) door set - birch	1.00 EA
56. Stain & finish bypass door set - slab only (per side)	4.00 EA
57a. Remove Closet shelf and rod package	6.00 LF
57b. Closet shelf and rod package	6.00 LF
58. Clean window unit (per side) 21 - 40 SF	1.00 EA
59a. Remove Light fixture	1.00 EA
59b. Light fixture	1.00 EA

CONTINUED - Rear BEDROOM

DESCRIPTION	QTY
60a. Remove 110 volt copper wiring run and box - rough in only	1.00 EA
60b. 110 volt copper wiring run and box - rough in only	1.00 EA
61a. Remove 110 volt copper wiring run, box and switch	1.00 EA
61b. 110 volt copper wiring run, box and switch	1.00 EA
62a. Remove 110 volt copper wiring run, box and outlet	4.00 EA
62b. 110 volt copper wiring run, box and outlet	4.00 EA
63. Deodorize building - Hot thermal fog	1294.56 CF

NOTES:



Hallway

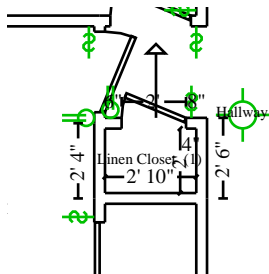
Height: Sloped

412.73 SF Walls	59.19 SF Ceiling
471.92 SF Walls & Ceiling	56.30 SF Floor
6.26 SY Flooring	40.33 LF Floor Perimeter
41.60 LF Ceil. Perimeter	

Missing Wall

3' X 8'

Opens into STAIRS



Subroom: Linen Closet (1)

Height: 8'

77.33 SF Walls	5.67 SF Ceiling
83.00 SF Walls & Ceiling	5.67 SF Floor
0.63 SY Flooring	9.67 LF Floor Perimeter
9.67 LF Ceil. Perimeter	

DESCRIPTION

QTY

64. Contents - move out then reset - Large room	1.00 EA
65a. Remove 1/2" drywall - hung, taped, floated, ready for paint	490.06 SF



RYZE CLAIM SOLUTIONS

RYZE Claim Solutions
888-898-RYZE Phone
877-839-8151 Fax

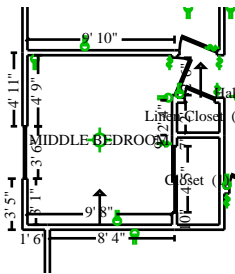
CONTINUED - Hallway

DESCRIPTION	QTY
65b. 1/2" drywall - hung, taped, floated, ready for paint	490.06 SF
66a. Remove Batt insulation - 4" - R11 - paper faced	40.00 SF
66b. Batt insulation - 4" - R11 - paper faced	40.00 SF
67a. Remove Wet spray cellulose insulation - 10" - R34	64.85 SF
67b. Wet spray cellulose insulation - 10" - R34	64.85 SF
68. Seal stud wall for odor control (shellac)	490.06 SF
69. Seal truss system (shellac) - 6 to 8/12	61.97 SF
70. Seal floor or ceiling joist system (shellac)	61.97 SF
71. Seal attic framing (shellac) - 6 to 8/12	61.97 SF
72a. Remove Batt insulation - 4" - R15 - paper faced	80.00 SF
72b. Batt insulation - 4" - R15 - paper faced	80.00 SF
73. Seal the ceiling w/latex based stain blocker - two coats	64.85 SF
74. Paint the walls - two coats	490.06 SF
75. Mask and prep for paint - plastic, paper, tape (per LF)	51.26 LF
76a. Remove Cove base molding - rubber or vinyl, 4" high	50.00 LF
76b. Cove base molding - rubber or vinyl, 4" high	50.00 LF
77a. Remove Underlayment - 1/4" lauan/mahogany plywood	61.97 SF
77b. Underlayment - 1/4" lauan/mahogany plywood	61.97 SF
78. Tile - vinyl composition	61.97 SF
79a. Remove Ductwork - hot or cold air (per room)	1.00 EA
79b. Ductwork - hot or cold air (per room)	1.00 EA
80a. Remove Smoke detector	1.00 EA
80b. Smoke detector	1.00 EA
81a. Remove Interior door unit	1.00 EA
81b. Interior door unit	1.00 EA
Linen closet	
82. Paint door/window trim & jamb - 2 coats (per side)	4.00 EA
83. Door knob - interior	1.00 EA
84. Paint door slab only - 2 coats (per side)	2.00 EA
85. Seal & paint closet shelving - single shelf - Small closet	5.00 EA
86a. Remove Closet package - hall/linen (4 shelves 3' wide)	1.00 EA
86b. Closet package - hall/linen (4 shelves 3' wide)	1.00 EA
87a. Remove Light fixture	1.00 EA

CONTINUED - Hallway

DESCRIPTION	QTY
87b. Light fixture	1.00 EA
88a. Remove 110 volt copper wiring run and box - rough in only	1.00 EA
88b. 110 volt copper wiring run and box - rough in only	1.00 EA
89a. Remove 110 volt copper wiring run, box and switch	2.00 EA
89b. 110 volt copper wiring run, box and switch	2.00 EA
90a. Remove 110 volt copper wiring run, box and outlet	4.00 EA
90b. 110 volt copper wiring run, box and outlet	4.00 EA
91. Deodorize building - Hot thermal fog	627.66 CF
92. Final cleaning - construction - Residential	61.97 SF

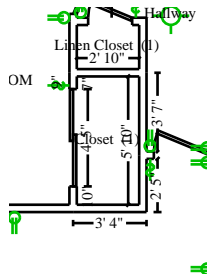
NOTES:



MIDDLE BEDROOM

Height: Sloped

420.00 SF Walls	116.18 SF Ceiling
536.18 SF Walls & Ceiling	109.56 SF Floor
12.17 SY Flooring	42.00 LF Floor Perimeter
43.37 LF Ceil. Perimeter	



Subroom: Closet (1)

Height: 8'

138.54 SF Walls	16.51 SF Ceiling
155.05 SF Walls & Ceiling	16.51 SF Floor
1.83 SY Flooring	17.32 LF Floor Perimeter
17.32 LF Ceil. Perimeter	

DESCRIPTION	QTY
93. Contents - move out then reset - Large room	1.00 EA



RYZE CLAIM SOLUTIONS

RYZE Claim Solutions
888-898-RYZE Phone
877-839-8151 Fax

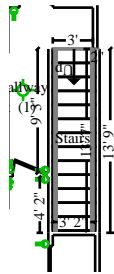
CONTINUED - MIDDLE BEDROOM

DESCRIPTION	QTY
94a. Remove 1/2" drywall - hung, taped, floated, ready for paint	558.54 SF
94b. 1/2" drywall - hung, taped, floated, ready for paint	558.54 SF
95. Seal stud wall for odor control (shellac)	558.54 SF
96. Seal truss system (shellac) - 6 to 8/12	126.06 SF
97. Seal floor or ceiling joist system (shellac)	126.06 SF
98. Seal attic framing (shellac) - 6 to 8/12	126.06 SF
99a. Remove Batt insulation - 4" - R15 - paper faced	80.00 SF
99b. Batt insulation - 4" - R15 - paper faced	80.00 SF
100. Seal the ceiling w/latex based stain blocker - two coats	132.68 SF
101. Seal/prime then paint the walls (2 coats)	558.54 SF
102a. Remove Suspended ceiling system - 2' x 4'	132.68 SF
102b. Suspended ceiling system - 2' x 4'	132.68 SF
103. Mask and prep for paint - plastic, paper, tape (per LF)	60.69 LF
104a. Remove Cove base molding - rubber or vinyl, 4" high	59.32 LF
104b. Cove base molding - rubber or vinyl, 4" high	59.32 LF
105a. Remove Vinyl window, horizontal sliding, 12-23 sf	1.00 EA
105b. Vinyl window, horizontal sliding, 12-23 sf	1.00 EA
106a. Remove Wrap wood window frame & trim with aluminum sheet - Large	1.00 EA
106b. Wrap wood window frame & trim with aluminum sheet - Large	1.00 EA
107a. Remove Sheathing - plywood - 3/4" CDX	126.06 SF
107b. Sheathing - plywood - 3/4" CDX	126.06 SF
108a. Remove Underlayment - 1/4" lauan/mahogany plywood	126.06 SF
108b. Underlayment - 1/4" lauan/mahogany plywood	126.06 SF
109. Tile - vinyl composition	126.06 SF
110a. Remove Ductwork - hot or cold air (per room)	1.00 EA
110b. Ductwork - hot or cold air (per room)	1.00 EA
111a. Remove Smoke detector	1.00 EA
111b. Smoke detector	1.00 EA
112a. Remove Interior door unit	1.00 EA
112b. Interior door unit	1.00 EA
113. Door knob - interior	1.00 EA
114. Paint door slab only - 2 coats (per side)	2.00 EA
115. Paint door/window trim & jamb - 2 coats (per side)	4.00 EA

CONTINUED - MIDDLE BEDROOM

DESCRIPTION	QTY
116a. Remove Bypass (sliding) door set - birch	1.00 EA
116b. Bypass (sliding) door set - birch	1.00 EA
117. Stain & finish bypass door set - slab only (per side)	4.00 EA
118a. Remove Light fixture	1.00 EA
118b. Light fixture	1.00 EA
119a. Remove 110 volt copper wiring run and box - rough in only	1.00 EA
119b. 110 volt copper wiring run and box - rough in only	1.00 EA
120a. Remove 110 volt copper wiring run, box and switch	2.00 EA
120b. 110 volt copper wiring run, box and switch	2.00 EA
121a. Remove 110 volt copper wiring run, box and outlet	3.00 EA
121b. 110 volt copper wiring run, box and outlet	3.00 EA
122. Deodorize building - Hot thermal fog	1227.60 CF

NOTES:



Stairs

Height: 17'

364.79 SF Walls	43.00 SF Ceiling
407.78 SF Walls & Ceiling	73.21 SF Floor
8.13 SY Flooring	35.05 LF Floor Perimeter
30.32 LF Ceil. Perimeter	

Missing Wall

3' X 17'

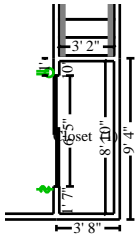
Opens into HALLWAY

Missing Wall

2' X 17'

Opens into Exterior

DESCRIPTION	QTY
123. Mask and prep for paint - plastic, paper, tape (per LF)	30.32 LF
124. Clean floor, strip & wax	73.21 SF
125. Clean cove base molding - rubber or vinyl	35.05 LF



Subroom: Closet (1)

Height: 8'

191.96 SF Walls	27.96 SF Ceiling
219.92 SF Walls & Ceiling	27.96 SF Floor
3.11 SY Flooring	23.99 LF Floor Perimeter
23.99 LF Ceil. Perimeter	

DESCRIPTION

QTY

136. Contents - move out then reset - Large room	1.00 EA
137a. Remove 1/2" drywall - hung, taped, floated, ready for paint	768.06 SF
137b. 1/2" drywall - hung, taped, floated, ready for paint	768.06 SF
SOFFIT INCLUDED	
138a. Remove Batt insulation - 4" - R11 - paper faced	288.80 SF
138b. Batt insulation - 4" - R11 - paper faced	288.80 SF
139a. Remove Wet spray cellulose insulation - 10" - R34	200.32 SF
139b. Wet spray cellulose insulation - 10" - R34	200.32 SF
140. Seal truss system (shellac) - 6 to 8/12	192.88 SF
141. Seal floor or ceiling joist system (shellac)	192.88 SF
142. Seal attic framing (shellac) - 6 to 8/12	192.88 SF
143. Seal stud wall for odor control (shellac)	740.06 SF
144a. Remove Batt insulation - 4" - R15 - paper faced	80.00 SF
144b. Batt insulation - 4" - R15 - paper faced	80.00 SF
145. Seal the ceiling w/latex based stain blocker - two coats	200.32 SF
146. Paint the walls - two coats	740.06 SF
147. Mask and prep for paint - plastic, paper, tape (per LF)	80.85 LF
148a. Remove Suspended ceiling system - 2' x 4'	200.32 SF
148b. Suspended ceiling system - 2' x 4'	200.32 SF
149a. Remove Cove base molding - rubber or vinyl, 4" high	79.66 LF
149b. Cove base molding - rubber or vinyl, 4" high	79.66 LF
150a. Remove Underlayment - 1/4" lauan/mahogany plywood	192.88 SF
150b. Underlayment - 1/4" lauan/mahogany plywood	192.88 SF
151. Tile - vinyl composition	192.88 SF
152a. Remove Ductwork - hot or cold air (per room)	1.00 EA
152b. Ductwork - hot or cold air (per room)	1.00 EA
153a. Remove Smoke detector	1.00 EA
153b. Smoke detector	1.00 EA
154a. Remove Interior door unit	1.00 EA
154b. Interior door unit	1.00 EA

Linen closet



RYZE CLAIM SOLUTIONS

RYZE Claim Solutions
888-898-RYZE Phone
877-839-8151 Fax

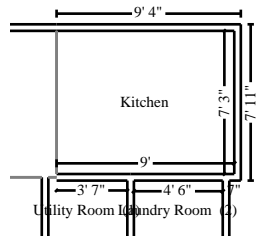
CONTINUED - FRONT BEDROOM

DESCRIPTION	QTY
155. Paint door/window trim & jamb - 2 coats (per side)	4.00 EA
156. Door knob - interior	1.00 EA
157. Paint door slab only - 2 coats (per side)	2.00 EA
158a. Remove Bypass (sliding) door set - birch	1.00 EA
158b. Bypass (sliding) door set - birch	1.00 EA
159. Stain & finish bypass door set - slab only (per side)	4.00 EA
160a. Remove Closet shelf and rod package	7.00 LF
160b. Closet shelf and rod package	7.00 LF
161. Clean window unit (per side) 21 - 40 SF	1.00 EA
162a. Remove Light fixture	2.00 EA
162b. Light fixture	2.00 EA
163a. Remove 110 volt copper wiring run and box - rough in only	2.00 EA
163b. 110 volt copper wiring run and box - rough in only	2.00 EA
164a. Remove 110 volt copper wiring run, box and switch	2.00 EA
164b. 110 volt copper wiring run, box and switch	2.00 EA
165a. Remove 110 volt copper wiring run, box and outlet	5.00 EA
165b. 110 volt copper wiring run, box and outlet	5.00 EA
166. Deodorize building - Hot thermal fog	1826.84 CF
167. Final cleaning - construction - Residential	192.88 SF

NOTES:

FIRST FLOOR

Main Level



Kitchen

Height: 8'

202.00 SF Walls	65.25 SF Ceiling
267.25 SF Walls & Ceiling	65.25 SF Floor
7.25 SY Flooring	25.25 LF Floor Perimeter
25.25 LF Ceil. Perimeter	

Missing Wall

7' 3" X 8'

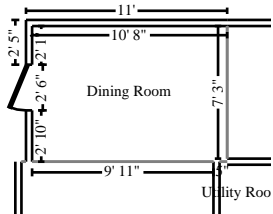
Opens into DINING_ROOM

DESCRIPTION

QTY

168. Mask and prep for paint - plastic, paper, tape (per LF)	25.25 LF
169. Seal the walls and ceiling w/latex based stain blocker - one coat	267.25 SF
170. Paint the walls and ceiling - two coats	267.25 SF
171. Clean refrigerator - interior and exterior	1.00 EA
172. Clean dishwasher - interior and exterior	1.00 EA
173. Clean range - interior and exterior	1.00 EA
174. Clean range hood	1.00 EA
175. Clean cabinetry - lower - inside and out	11.00 LF
176a. Remove Heat/AC register - Mechanically attached	1.00 EA
176b. Heat/AC register - Mechanically attached	1.00 EA
177. Clean ductwork - Interior (PER REGISTER)	2.00 EA
178. Clean cabinetry - upper - inside and out	17.50 LF
179. Clean countertop	18.00 SF
180a. Remove Countertop - post formed plastic laminate	13.00 LF
180b. Countertop - post formed plastic laminate	13.00 LF
181. Clean sink - double	1.00 EA
182. Sink strainer and drain assembly	1.00 EA
183. Sink faucet - Kitchen	1.00 EA
184. Clean garbage disposer	1.00 EA
185. Clean floor, strip & wax	65.25 SF
186. Clean baseboard	1.00 LF
187. Clean light fixture	2.00 EA
188. Cleaning Technician - per hour	1.00 HR
189. Deodorize building - Hot thermal fog	522.00 CF

NOTES:



Dining Room

Height: 8'

144.67 SF Walls	79.11 SF Ceiling
223.78 SF Walls & Ceiling	79.11 SF Floor
8.79 SY Flooring	18.08 LF Floor Perimeter
18.08 LF Ceil. Perimeter	

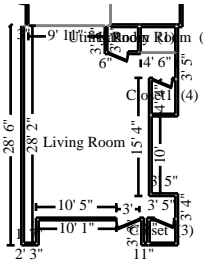
Missing Wall	7' 3" X 8'	Opens into KITCHEN
Missing Wall	9' 11" X 8'	Opens into LIVING_ROOM
Missing Wall	5" X 8'	Opens into UTILITY_ROOM

DESCRIPTION

QTY

190. Contents - move out then reset	1.00 EA
191. Floor protection - self-adhesive plastic film	1.00 SF
192. Scrape the ceiling & prep for paint	79.11 SF
193. Mask wall - plastic, paper, tape (per LF)	18.08 LF
194. Texture drywall - heavy hand texture	79.11 SF
195. Seal/prime then paint the ceiling (2 coats)	79.11 SF
196. Paint the walls - two coats	144.67 SF
197. Clean register - heat / AC	1.00 EA
198. Clean ductwork - Interior (PER REGISTER)	1.00 EA
199. Clean floor, strip & wax	79.11 SF
200. Clean baseboard	18.08 LF
201. Paint door or window opening - 2 coats (per side)	1.00 EA
202. Paint door slab only - 2 coats (per side)	2.00 EA
203. Clean window unit (per side) 10 - 20 SF	1.00 EA
204. Electrician - per hour	3.00 HR
205. Clean light fixture	1.00 EA
206. Clean thermostat	1.00 EA
207a. Remove Breaker panel - 150 amp	1.00 EA
207b. Breaker panel - 150 amp	1.00 EA
208. Deodorize building - Hot thermal fog	632.89 CF
209. Final cleaning - construction - Residential	79.11 SF

NOTES:



Living Room

Height: 8'

753.33 SF Walls	411.26 SF Ceiling
1164.59 SF Walls & Ceiling	411.26 SF Floor
45.70 SY Flooring	94.17 LF Floor Perimeter
94.17 LF Ceil. Perimeter	

Missing Wall

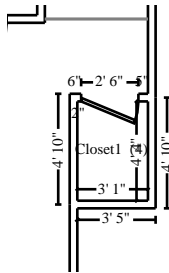
3" X 8'

Opens into Exterior

Missing Wall

9' 11" X 8'

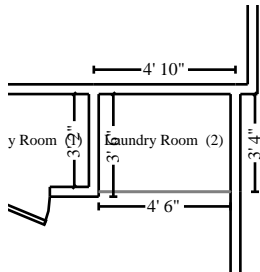
Opens into DINING_ROOM



Subroom: Closet1 (4)

Height: 8'

118.67 SF Walls	13.36 SF Ceiling
132.03 SF Walls & Ceiling	13.36 SF Floor
1.48 SY Flooring	14.83 LF Floor Perimeter
14.83 LF Ceil. Perimeter	



Subroom: Laundry Room (2)

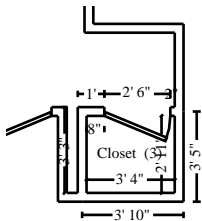
Height: 8'

90.67 SF Walls	15.00 SF Ceiling
105.67 SF Walls & Ceiling	15.00 SF Floor
1.67 SY Flooring	11.33 LF Floor Perimeter
11.33 LF Ceil. Perimeter	

Missing Wall

4' 6" X 8'

Opens into LIVING_ROOM



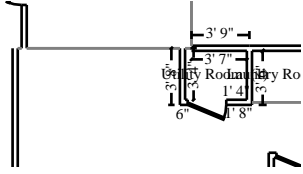
Subroom: Closet (3)

Height: 8'

100.11 SF Walls	9.74 SF Ceiling
109.85 SF Walls & Ceiling	9.74 SF Floor
1.08 SY Flooring	12.51 LF Floor Perimeter
12.51 LF Ceil. Perimeter	

Subroom: Utility Room (1)

Height: 8'



112.67 SF Walls
 125.40 SF Walls & Ceiling
 1.42 SY Flooring
 14.08 LF Ceil. Perimeter

12.74 SF Ceiling
 12.74 SF Floor
 14.08 LF Floor Perimeter

Missing Wall

5" X 8'

Opens into DINING_ROOM

DESCRIPTION

QTY

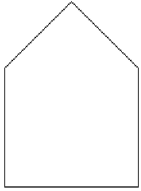
210. Contents - move out then reset	1.00 EA
211. 5/8" drywall - hung, taped, floated, ready for paint	64.00 SF
212. Clean floor or roof joist system - Heavy	64.00 SF
213. Seal floor or ceiling joist system (shellac)	64.00 SF
214. Seal the surface area w/latex based stain blocker - one coat	64.00 SF
215. Floor protection - self-adhesive plastic film	1.00 SF
216. Scrape the ceiling & prep for paint	462.10 SF
217. Mask wall - plastic, paper, tape (per LF)	146.93 LF
218. Texture drywall - heavy hand texture	462.10 SF
219. Seal/prime then paint the ceiling (2 coats)	462.10 SF
220. Paint the walls - two coats	1175.44 SF
221. Clean register - heat / AC	2.00 EA
222. Clean ductwork - Interior (PER REGISTER)	2.00 EA
223. Clean floor, strip & wax	462.10 SF
224. Clean baseboard	1.00 LF
225. Paint door or window opening - 2 coats (per side)	4.00 EA
226. Paint door slab only - 2 coats (per side)	8.00 EA
227. Clean window unit (per side) 10 - 20 SF	1.00 EA
228. Clean light fixture	2.00 EA
229. Clean the surface area	125.40 SF
INTERIOR FURNACE/UTILITY	
230. Clean water heater	1.00 EA
231. Furnace - check, heavy clean, replace filters and service	1.00 EA
232. Deodorize building - Hot thermal fog	3696.76 CF

NOTES:



RYZE CLAIM SOLUTIONS

RYZE Claim Solutions
888-898-RYZE Phone
877-839-8151 Fax



Left Elevation

Formula Elevation 58' x 8' x 0"

464.00 SF Walls
464.00 SF Long Wall
58.00 LF Ceil. Perimeter

58.00 LF Floor Perimeter
464.00 SF Short Wall

DESCRIPTION

QTY

233. Siding - Labor Minimum	1.00 EA
234a. Remove Soffit - box framing - 1' overhang	8.00 LF
234b. Soffit - box framing - 1' overhang	8.00 LF
235a. Remove Fascia - metal - 6"	10.00 LF
235b. Fascia - metal - 6"	10.00 LF
236a. Remove Soffit - metal	10.00 SF
236b. Soffit - metal	10.00 SF
237. Roofing - Labor Minimum	1.00 EA
238a. Remove Gutter / downspout - aluminum - up to 5"	20.00 LF
238b. Gutter / downspout - aluminum - up to 5"	20.00 LF
239. Clean with pressure/chemical spray - Heavy	540.00 SF

NOTES:

Miscellaneous

DESCRIPTION

QTY

240. Taxes, insurance, permits & fees (Bid Item) ON INCURRED BASIS	1.00 EA
---	---------

NOTES:



RYZE CLAIM SOLUTIONS

RYZE Claim Solutions
888-898-RYZE Phone
877-839-8151 Fax

Debris Removal

DESCRIPTION	QTY
241. Dumpster load - Approx. 30 yards, 5-7 tons of debris	1.00 EA

NOTES:

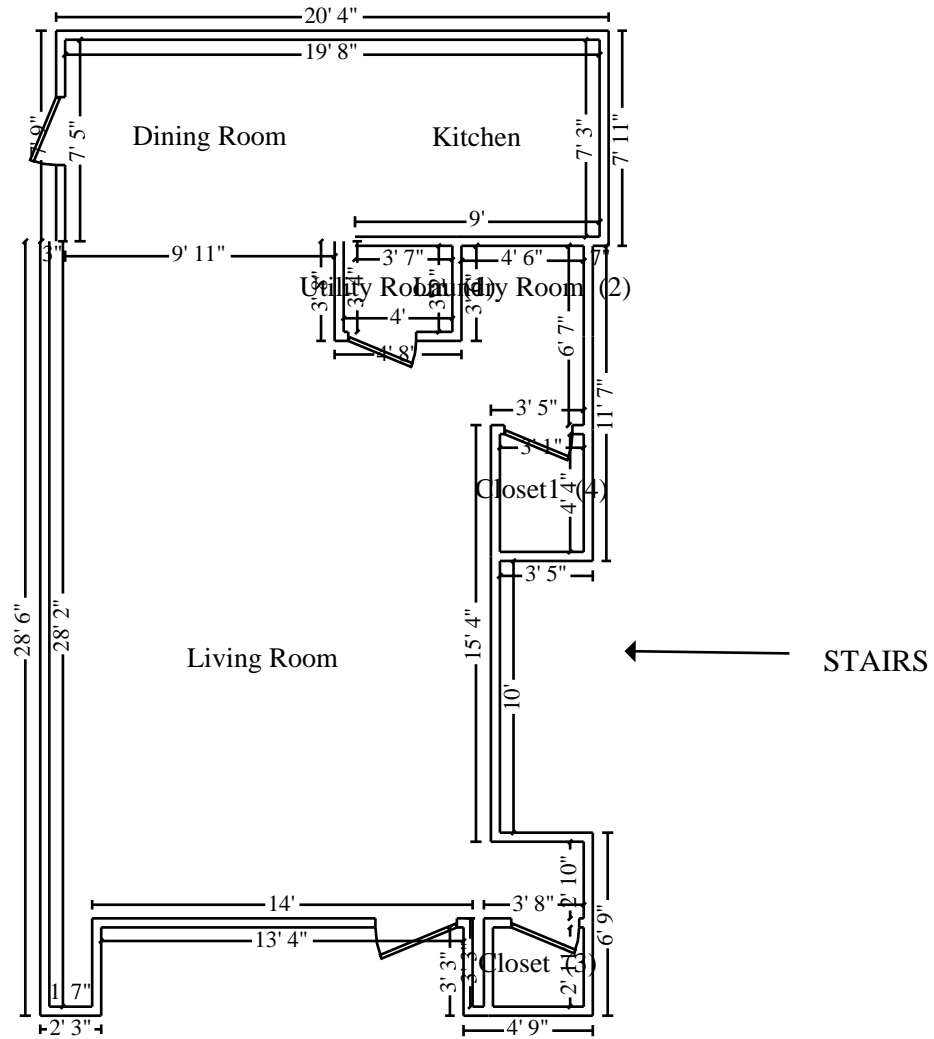
Labor Minimums Applied

DESCRIPTION	QTY
242. Window labor minimum	1.00 EA
243. Gutter labor minimum	1.00 EA

NOTES:

Grand Total Areas:

5,084.89 SF Walls	1,267.19 SF Ceiling	6,352.08 SF Walls and Ceiling
1,280.45 SF Floor	142.27 SY Flooring	590.46 LF Floor Perimeter
464.00 SF Long Wall	464.00 SF Short Wall	589.56 LF Ceil. Perimeter
1,280.45 Floor Area	1,379.62 Total Area	4,095.59 Interior Wall Area
2,089.43 Exterior Wall Area	226.76 Exterior Perimeter of Walls	
0.00 Surface Area	0.00 Number of Squares	0.00 Total Perimeter Length
0.00 Total Ridge Length	0.00 Total Hip Length	



Main Level